

# CANADA LIFE GROWTH AND INCOME FUND (GWLIM)

(Formerly Growth and Income Fund (GWLIM))

---

## **Annual Management Report of Fund Performance**

For the Year Ended March 31, 2021

*This Annual Management Report of Fund Performance contains financial highlights but does not contain the complete annual financial statements of the investment fund. You may obtain a copy of the annual financial statements, at no cost, by contacting us using one of the methods noted under Fund Formation and Series Information, by visiting our website at [www.canadalifeinvest.ca](http://www.canadalifeinvest.ca) or by visiting the SEDAR website at [www.sedar.com](http://www.sedar.com).*

*Securityholders may also contact us using one of these methods to request a copy of the investment fund's interim financial report, proxy voting policies and procedures, proxy voting disclosure record or quarterly portfolio disclosure. For more information, please refer to the Fund's Simplified Prospectus, Annual Information Form and Fund Facts, which may also be obtained, at no cost, using any of the methods outlined above.*

*For the Fund's current net asset values per security and for more recent information on general market events, please visit our website.*

### **A NOTE ON FORWARD-LOOKING STATEMENTS**

*This report may contain forward-looking statements that reflect our current expectations or forecasts of future events. Forward-looking statements include statements that are predictive in nature, depend upon or refer to future events or conditions, or include words such as "expects", "anticipates", "intends", "plans", "believes", "estimates", "preliminary", "typical" and other similar expressions. In addition, these statements may relate to future corporate actions, future financial performance of a fund or a security and their future investment strategies and prospects. Forward-looking statements are inherently subject to, among other things, risks, uncertainties and assumptions that could cause actual events, results, performance or prospects to differ materially from those expressed in, or implied by, these forward-looking statements. These risks, uncertainties and assumptions include, without limitation, general economic, political and market factors in North America and internationally, interest and foreign exchange rates, the volatility of global equity and capital markets, business competition, technological change, changes in government regulations, changes in securities laws and regulations, changes in tax laws, unexpected judicial or regulatory proceedings, catastrophic events, outbreaks of disease or pandemics (such as COVID-19), and the ability of Canada Life Investment Management Ltd. to attract or retain key employees. The foregoing list of important risks, uncertainties and assumptions is not exhaustive. Please consider these and other factors carefully and do not place undue reliance on forward-looking statements.*

*The forward-looking information contained in this report is current only as of the date of this report. There should not be an expectation that such information will in all circumstances be updated, supplemented or revised whether as a result of new information, changing circumstances, future events or otherwise.*

# CANADA LIFE GROWTH AND INCOME FUND (GWLIM)

(Formerly Growth and Income Fund (GWLIM))

ANNUAL MANAGEMENT REPORT OF FUND PERFORMANCE | For the Year Ended March 31, 2021

## Management Discussion of Fund Performance

June 3, 2021

This Management Discussion of Fund Performance presents the portfolio management team's view on the significant factors and developments during the period ended March 31, 2021 (the "period"), that have affected the Fund's performance and outlook. If the Fund was established during the period, "period" represents the period from inception to the end of the fiscal period. For information on the Fund's longer-term performance, as applicable, please refer to the *Past Performance* section of the report. In this report, "CLIML" refers to Canada Life Investment Management Ltd., the manager of the Fund. CLIML is wholly owned by The Canada Life Assurance Company ("Canada Life"). CLIML has entered into a fund administration agreement with Mackenzie Financial Corporation ("Mackenzie"), an affiliate of CLIML and Canada Life, for administrative services (see *Recent Developments*). In addition, net asset value ("NAV") refers to the value of the Fund as calculated for transaction purposes, on which the discussion of Fund performance is based.

### Investment Objective and Strategies

The Fund seeks long-term capital growth and income by investing primarily in equities issued by companies around the world and Canadian fixed income and money market securities, directly, through other investment funds or through derivatives that provide exposure to such securities or investment funds. The Fund's asset mix will generally range between 40%–70% equities and 30%–60% fixed income securities. The Fund may hold up to 49% of its assets in foreign investments.

### Risk

The risks of the Fund remain as discussed in the Fund's Simplified Prospectus.

The Fund is suitable for long-term investors looking for a Canadian balanced fund to hold as part of their portfolio, who can handle the volatility of stock and bond markets, and who have a low to medium tolerance for risk.

### Results of Operations

#### Investment Performance

The performance of the Fund's Q Series (formerly Quadrus Series) securities is discussed below. The performance of all series is shown in the *Past Performance* section of the report. Where series returns differ, it is primarily because different levels of fees and expenses were charged to each series, or because securities of a series were not issued and outstanding for the entire reporting period. Please refer to the *Fund Formation and Series Information* section of this report for the varying management and administration fees payable by each series.

During the period, the Fund's Q Series securities returned 16.8% (after deducting fees and expenses paid by the series). This compares with a return of 1.6% for the Fund's broad-based index, the FTSE Canada Universe Bond Index, and a return of 23.0% for a blended index.\* All index and

\* The blended index is composed of a 40% weighting in the FTSE Canada Universe Bond Index (returned 1.6%), a 30% weighting in the S&P/TSX Composite Index (returned 44.2%), a 15% weighting in the S&P 500 Index (returned 39.4%) and a 15% weighting in the MSCI EAFE (Net) Index (returned 28.8%).

series returns are calculated on a total return basis in Canadian dollar terms. Investors cannot invest in an index without incurring fees, expenses and commissions, which are not reflected in the index returns.

Global equity markets, including Canada's, rebounded to all-time highs following the pandemic-driven collapse in March 2020. News of successful vaccine development helped lift stocks expected to benefit from economic reopening. However, waves of COVID-19 infections and hospitalizations in the second half of the period slowed reopening in many regions. In response, governments and central banks continued to provide significant stimulus and accommodative monetary policies to boost struggling economies. The Bank of Canada kept its policy interest rate at 0.25% and made substantial bond purchases. Toward the end of the period, yields on 10-year government bonds increased to pre-pandemic levels. Currency movements reduced returns in Canadian dollar terms.

Within the S&P/TSX Composite Index, consumer discretionary, information technology and health care were the strongest sectors, while communication services, consumer staples and utilities were the weakest.

Within the S&P 500 Index, materials, energy and consumer discretionary were the strongest sectors in Canadian dollar terms, while utilities, consumer staples and real estate were the weakest.

Within the MSCI EAFE (Net) Index, Austria, Sweden and the Netherlands were the strongest-performing countries in Canadian dollar terms, while Switzerland, Portugal and New Zealand were the weakest. The materials, consumer discretionary and information technology sectors were the strongest performers, while health care, consumer staples and energy were the weakest.

The following discussion reflects the Fund's allocation decisions and the activities and performance of its underlying investment funds and other directly held securities. The Fund outperformed the broad-based index because of its allocation to equities, which outperformed fixed income in the period. Given the Fund's mandate, the return of the blended index is a more meaningful comparison.

The Fund underperformed the blended index, with its equity portfolio detracting from performance. The Fund's cash position also detracted from performance as markets rose.

Within the fixed income portion of the Fund, overweight exposure to financial and energy sector corporate bonds detracted from performance. Conversely, underweight exposure to federal and provincial bonds contributed to performance.

Within the equity portion of the Fund, stock selection and an overweight position in the health care sector, and stock selection in information technology and real estate, detracted from performance. At a country level, stock selection in Canada and the United States detracted. Conversely, stock selection in the industrials and materials sectors contributed to performance, as did stock selection in Ireland and holdings in South Korea.

Over the period, the Fund's exposure to Canada increased based on the valuations of Canadian securities relative to those in other regions. Exposure to provincial bonds decreased based on valuations and expectations of a steeper yield curve. Changes to the portfolio included a new allocation to Canada Life US Equity Fund (London Capital) and the elimination of the allocations to Canada Life US Value Fund (Putnam) and Canada Life Mid Cap Canada Fund (GWLIM).

# CANADA LIFE GROWTH AND INCOME FUND (GWLIM)

(Formerly Growth and Income Fund (GWLIM))

ANNUAL MANAGEMENT REPORT OF FUND PERFORMANCE | For the Year Ended March 31, 2021

## Net Assets

The Fund's NAV increased by 946.0% to \$279.0 million at March 31, 2021, from \$26.7 million at March 31, 2020. This change was composed primarily of \$29.3 million in net income (including dividend and interest income) from investment performance, after deducting fees and expenses, \$223.7 million in net sales (which includes an inflow of \$258.8 million relating to fund merger activity), and \$0.7 million in cash distributions.

## Fees and Expenses

The management expense ratio ("MER") for Q Series of 2.46% during the year ended March 31, 2021, was slightly higher than the MER of 2.43% for the year ended March 31, 2020. The MERs (before and after waivers or absorptions, if any) for all series are presented in the *Financial Highlights* section of this report. The MERs for D5 Series, D8 Series, L5 Series, L8 Series and QF5 Series increased due to an increase in fund costs.

## Recent Developments

Governments worldwide have enacted various measures in seeking to combat the spread of the COVID-19 virus. These measures have led to significant volatility in equity markets and material disruption to businesses globally, resulting in an economic slowdown.

Ongoing uncertainty regarding the duration and long-term impact of the pandemic and the implementation of vaccination programs, as well as the efficacy of government and central bank monetary and fiscal interventions, may continue to affect the Fund's performance in future periods.

The portfolio management team responsible for asset allocation decisions for the Fund expects a strong recovery in global gross domestic product and corporate earnings in 2021, driven by the rollout of vaccines, fiscal stimulus and abundant central bank liquidity. In turn, the team expects this recovery to support equity markets.

Global inflation is forecast to rise slightly in 2021, in part due to emerging supply-side constraints. Despite any short-term changes, the team believes that, over the longer term, inflation will remain anchored close to the 2% targeted by central banks. The team also expects central banks to maintain liquid conditions in support of the global recovery.

However, the team believes key risks to the recovery remain, including the possibility of an extended lockdown due to vaccine rollout delays and new virus variants, and tighter financial conditions if bond yields rise sharply. The team believes that bonds remain an attractive diversification tool in creating a resilient portfolio for various future economic scenarios.

Following the approval of the Mackenzie Funds' Independent Review Committee ("IRC"), Growth and Income Class (GWLIM) merged into the Fund on June 26, 2020. Mackenzie did not consider this merger to be a material change from the Fund's perspective.

On August 14, 2020, the Fund was renamed Canada Life Growth and Income Fund (GWLIM). On the same date, certain underlying funds were also renamed. Core Bond Fund (Portico) was renamed Canada Life Core Bond Fund (Portico). U.S. Dividend Fund (GWLIM) was renamed Canada Life US Dividend Fund (GWLIM). U.S. Value Fund (Putnam) was renamed Canada Life US Value Fund (Putnam). Dividend Fund (GWLIM) was renamed Canada Life Dividend Fund (GWLIM). Canadian Growth Fund (GWLIM) was renamed Canada Life Canadian Growth Fund (GWLIM). Mid Cap Canada Fund (GWLIM) was renamed Canada Life Mid Cap Canada Fund (GWLIM).

Effective January 1, 2021, the Fund's manager and trustee changed from Mackenzie to CLIML following CLIML's receipt of regulatory approval to be registered as an investment fund manager. This change received a positive recommendation from the Mackenzie Funds' IRC. Mackenzie continues to provide certain administrative and transfer agency services to the Fund.

Concurrent with this change, Mackenzie replaced GLC Asset Management Group Ltd. as sub-advisor to the Fund and to underlying funds Canada Life Core Bond Fund (Portico), Canada Life US Dividend Fund (GWLIM), Canada Life Dividend Fund (GWLIM), Canada Life US Equity Fund (London Capital) and Canada Life Canadian Growth Fund (GWLIM).

Also effective January 1, 2021, the Mackenzie Funds' IRC was replaced by the Canada Life Funds' IRC, which consists of the following three members: Steve Geist (Chair), Joanne De Laurentiis and Linda Currie.

## Related Party Transactions

The following arrangements result in fees paid by the Fund to CLIML or to companies affiliated with the Fund.

## Management and Administration Services

For each applicable series, the Fund paid management fees and administration fees to Mackenzie for the period from April 1 to December 31, 2020 ("the pre-manager change period"), and to CLIML thereafter at the annual rates specified under *Fund Formation and Series Information* in this report and as more fully described in the Prospectus. After the pre-manager change period, CLIML paid the administration fee to Mackenzie for providing day-to-day administration services, including financial reporting, communications to investors and securityholder reporting, maintaining the books and records of the Fund, NAV calculations, and processing orders for securities of the Fund. In return for the administration fees, Mackenzie pays all costs and expenses (other than certain specified fund costs) required to operate the Fund that are not included in management fees. See also *Management Fees*.

## Other Related Party Transactions

Mackenzie is wholly owned by IGM Financial Inc., which in turn is a subsidiary of Power Corp. of Canada. Companies related to Power Corp. of Canada are therefore considered affiliates of Mackenzie. At March 31, 2021, the Fund held the following investment(s) in companies affiliated with Mackenzie: \$1.1 million invested in securities issued by Groupe Bruxelles Lambert SA. The investment(s) represented 0.4% of the Fund's NAV. In making the investment(s), Mackenzie relied on the approval of the Mackenzie Funds' IRC in the pre-manager change period, and CLIML relied on the approval of the Canada Life Funds' IRC thereafter. Both IRCs issued the approval on the basis that the investment(s) would be made in compliance with Mackenzie's and CLIML's policies. These policies are designed to ensure that any related party transaction (i) is made free from any influence by an entity related to Mackenzie and CLIML and without taking into account any considerations relevant to an entity related to Mackenzie and CLIML; (ii) represents the business judgment of Mackenzie and CLIML, uninfluenced by considerations other than the best interests of the Fund; and (iii) achieves a fair and reasonable result for the Fund.

# CANADA LIFE GROWTH AND INCOME FUND (GWLIM)

(Formerly Growth and Income Fund (GWLIM))

ANNUAL MANAGEMENT REPORT OF FUND PERFORMANCE | For the Year Ended March 31, 2021

At March 31, 2021, Canada Life had an investment of \$31,295 in the Fund (less than 0.1% of the Fund's NAV).

Mackenzie relied on an approval issued by the Mackenzie Funds' Independent Review Committee to proceed with the merger of Growth and Income Class (GWLIM) into the Fund in June 2020.

Mackenzie relied on a recommendation issued by the Mackenzie Funds' Independent Review Committee to replace Mackenzie with CLIML as the Fund's manager and trustee in January 2021.

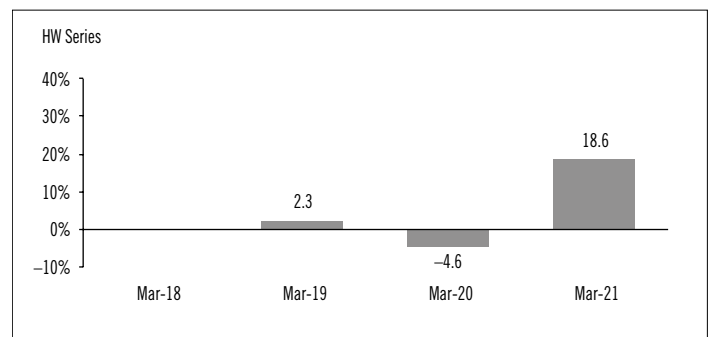
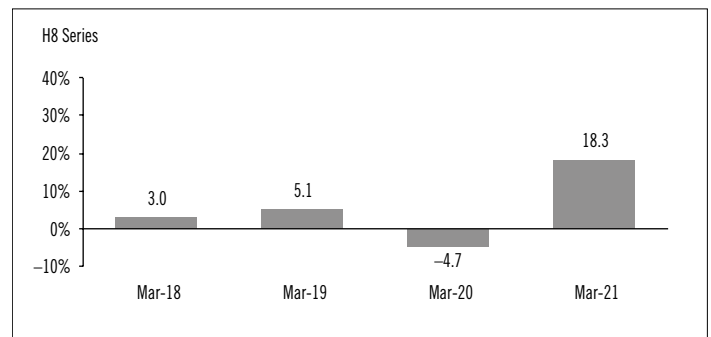
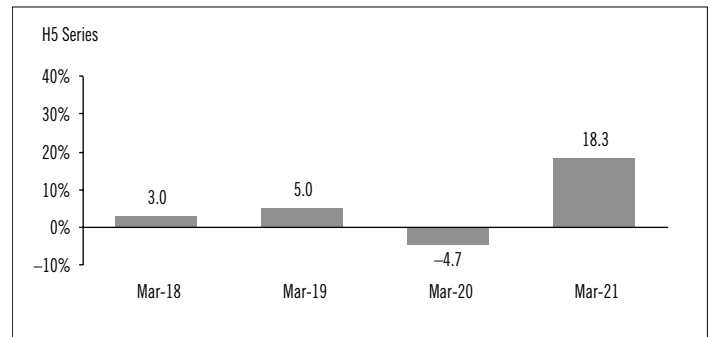
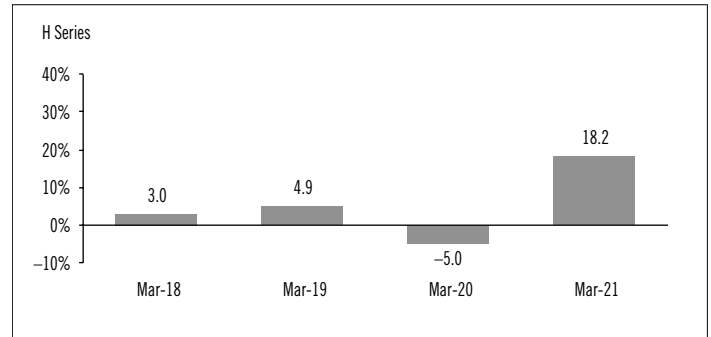
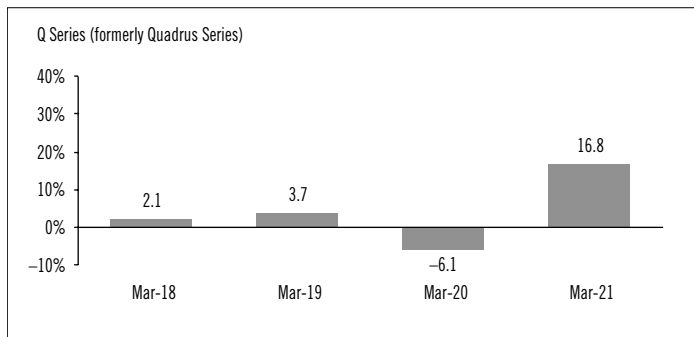
## Past Performance

The Fund's past performance information is presented in the following charts and table. It assumes all distributions made by the Fund in the periods presented are reinvested in additional securities of the relevant series of the Fund. The charts and table do not take into account sales, redemption, distribution or optional charges, or income taxes payable by any investor that would have reduced returns. The past performance of the Fund is not necessarily an indication of how it will perform in the future.

If you hold this Fund outside of a registered plan, income and capital gains distributions paid to you increase your income for tax purposes whether paid to you in cash or reinvested in additional securities of the Fund. The amount of reinvested taxable distributions is added to the adjusted cost base of the securities that you own. This would decrease your capital gain or increase your capital loss when you later redeem from the Fund, thereby ensuring that you are not taxed on this amount again. Please consult your tax advisor regarding your personal tax situation.

## Year-by-Year Returns

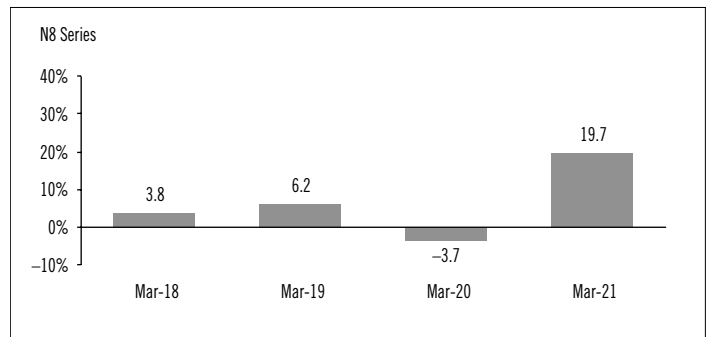
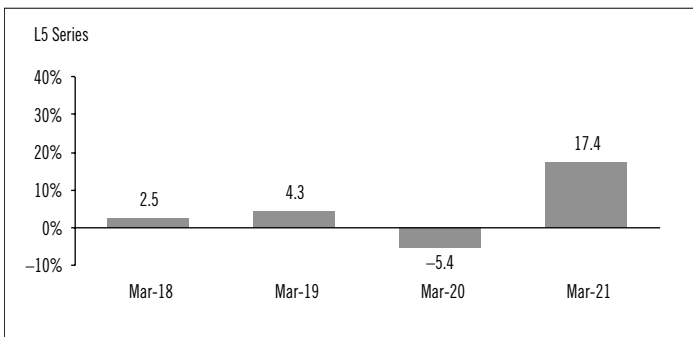
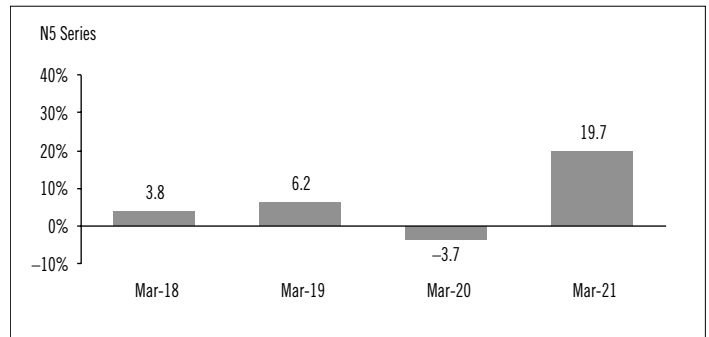
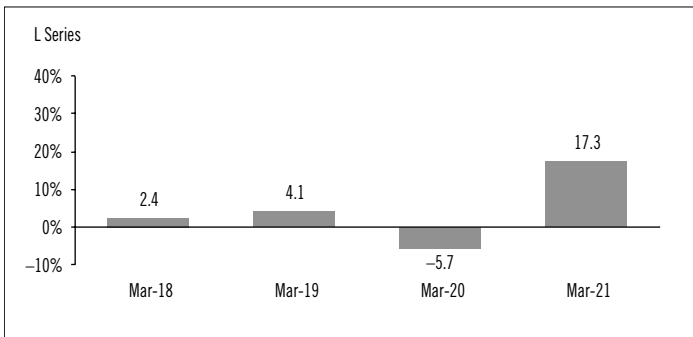
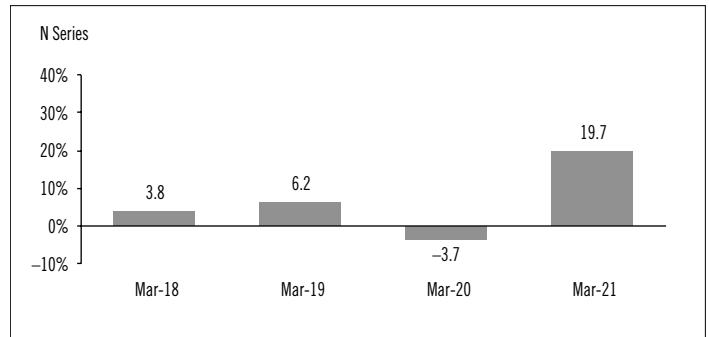
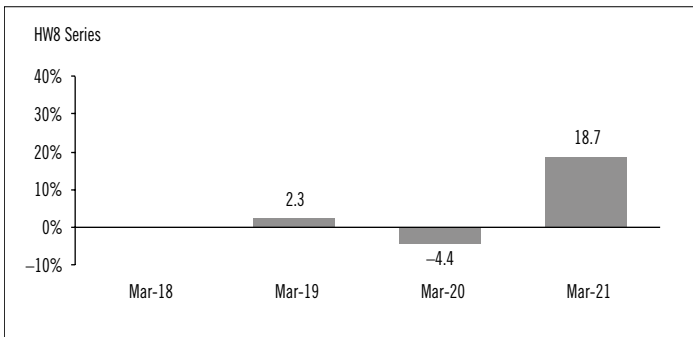
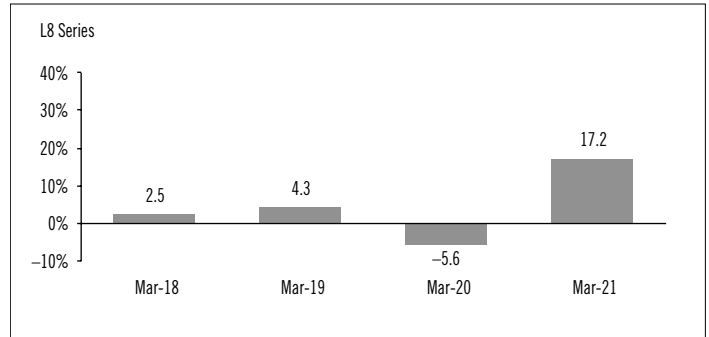
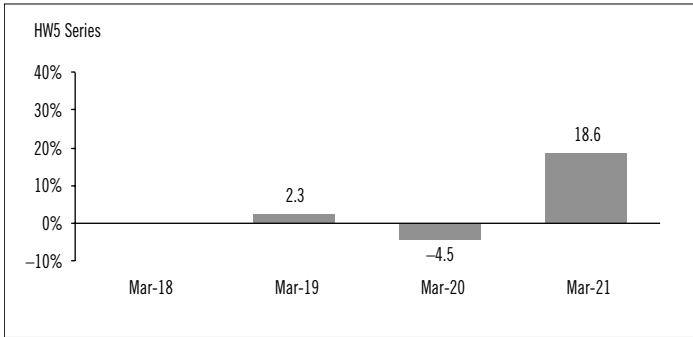
The following bar charts present the performance of each series of the Fund for each of the fiscal periods shown. The charts show, in percentage terms, how much an investment made on the first day of each fiscal period, or on the series inception or reinstatement date, as applicable, would have increased or decreased by the last day of the fiscal period presented. Series inception or reinstatement dates can be found under *Fund Formation and Series Information*.



# CANADA LIFE GROWTH AND INCOME FUND (GWLIM)

(Formerly Growth and Income Fund (GWLIM))

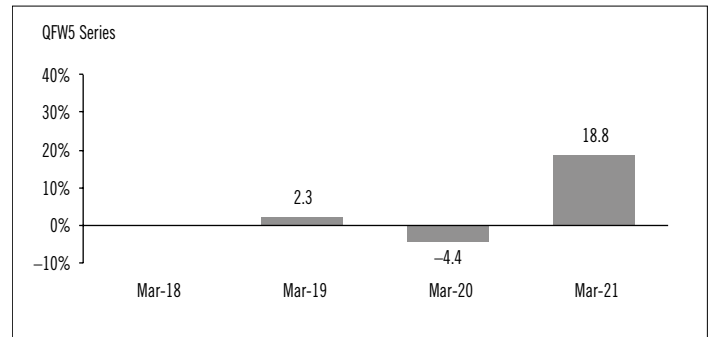
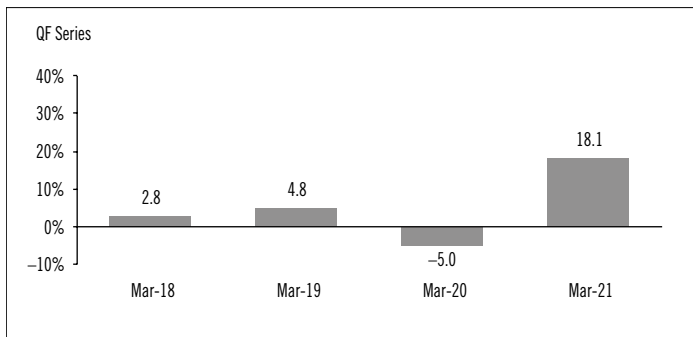
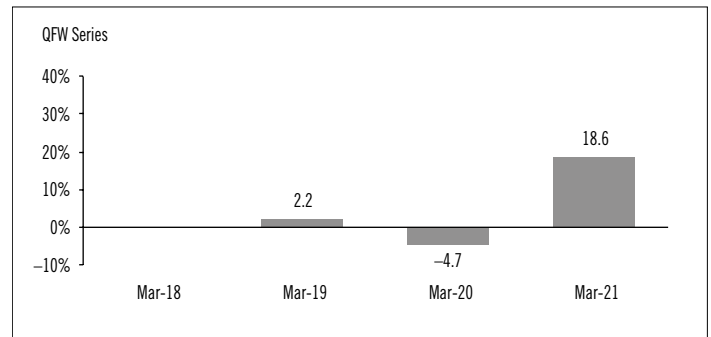
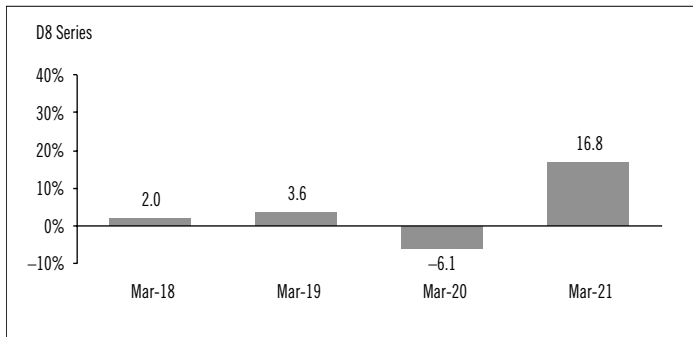
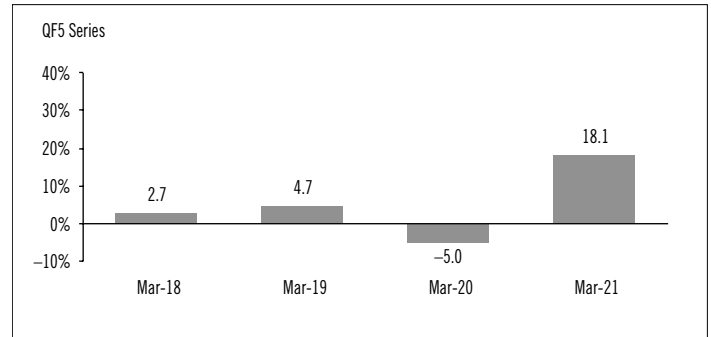
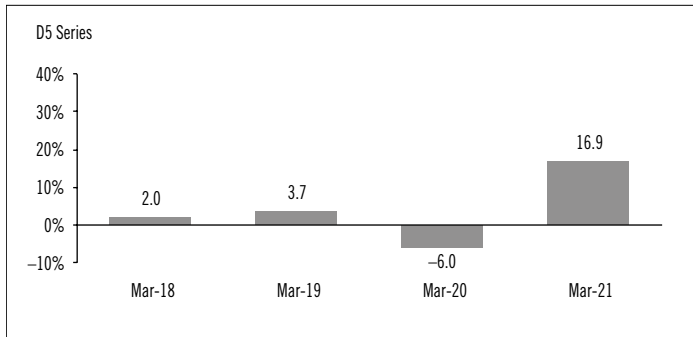
ANNUAL MANAGEMENT REPORT OF FUND PERFORMANCE | For the Year Ended March 31, 2021



# CANADA LIFE GROWTH AND INCOME FUND (GWLIM)

(Formerly Growth and Income Fund (GWLIM))

ANNUAL MANAGEMENT REPORT OF FUND PERFORMANCE | For the Year Ended March 31, 2021



# CANADA LIFE GROWTH AND INCOME FUND (GWLIM)

(Formerly Growth and Income Fund (GWLIM))

ANNUAL MANAGEMENT REPORT OF FUND PERFORMANCE | For the Year Ended March 31, 2021

## Annual Compound Returns

The following table compares the historical annual compound total returns for each series of the Fund with the relevant index or indices shown below for each of the periods ended March 31, 2021. Investors cannot invest in an index without incurring fees, expenses and commissions, which are not reflected in these performance figures.

All index returns are calculated in Canadian dollars on a total return basis, meaning that all dividend payments, interest income accruals and interest payments are reinvested.

Percentage Return: <sup>1</sup>	1 Yr	3 Yr	5 Yr	10 Yr	Since Inception <sup>2</sup>
Q Series (formerly Quadrus Series)	16.8	4.4	n/a	n/a	4.1
H Series	18.2	5.6	n/a	n/a	5.3
H5 Series	18.3	5.8	n/a	n/a	5.5
H8 Series	18.3	5.8	n/a	n/a	5.5
HW Series	18.6	n/a	n/a	n/a	5.7
HW5 Series	18.6	n/a	n/a	n/a	5.7
HW8 Series	18.7	n/a	n/a	n/a	5.8
L Series	17.3	4.8	n/a	n/a	4.5
L5 Series	17.4	5.0	n/a	n/a	4.7
L8 Series	17.2	4.9	n/a	n/a	4.6
N Series	19.7	7.0	n/a	n/a	6.6
N5 Series	19.7	7.0	n/a	n/a	6.6
N8 Series	19.7	7.0	n/a	n/a	6.6
D5 Series	16.9	4.4	n/a	n/a	4.1
D8 Series	16.8	4.4	n/a	n/a	4.1
QF Series	18.1	5.5	n/a	n/a	5.2
QF5 Series	18.1	5.5	n/a	n/a	5.2
QFW Series	18.6	n/a	n/a	n/a	5.6
QFW5 Series	18.8	n/a	n/a	n/a	5.8
Blended Index	23.0	8.0	n/a	n/a	Note 3
FTSE Canada Universe Bond Index*	1.6	3.8	n/a	n/a	Note 4
S&P/TSX Composite Index	44.2	10.2	n/a	n/a	Note 5
S&P 500 Index	39.4	15.8	n/a	n/a	Note 6
MSCI EAFE (Net) Index	28.8	5.2	n/a	n/a	Note 7

\* Broad-based index

The blended index was composed of 40% FTSE Canada Universe Bond Index, 30% S&P/TSX Composite Index, 15% S&P 500 Index and 15% MSCI EAFE (Net) Index.

The FTSE Canada Universe Bond Index is a broad measure of Canadian bonds with terms to maturity of more than one year. It includes federal, provincial, municipal and corporate bonds rated "BBB" or higher.

The S&P/TSX Composite Index is a capitalization weighted index that represents some of the largest float adjusted stocks trading on the Toronto Stock Exchange.

The S&P 500 Index is a market capitalization weighted index of 500 widely held securities, designed to measure broad U.S. equity performance.

The MSCI EAFE (Net) Index represents large- and mid-cap equity performance across 21 developed markets, excluding the United States and Canada. Net total returns are calculated after the deduction of withholding tax from the foreign income and dividends of its constituents.

- (1) The percentage return differs for each series because the management fee rate and expenses differ for each series.
- (2) The return since inception for each series will differ when the inception date differs and is only provided when a series has been active for a period of less than 10 years.
- (3) The return of the blended index since inception for each applicable series is as follows: Q Series (formerly Quadrus Series) 7.6%, H Series 7.6%, H5 Series 7.6%, H8 Series 7.6%, HW Series 7.6%, HW5 Series 7.6%, HW8 Series 7.6%, L Series 7.6%, L5 Series 7.6%, L8 Series 7.6%, N Series 7.6%, N5 Series 7.6%, N8 Series 7.6%, D5 Series 7.6%, D8 Series 7.6%, QF Series 7.6%, QF5 Series 7.6%, QFW Series 7.6%, QFW5 Series 7.6%.
- (4) The return of the FTSE Canada Universe Bond Index since inception for each applicable series is as follows: Q Series (formerly Quadrus Series) 3.3%, H Series 3.3%, H5 Series 3.3%, H8 Series 3.3%, HW Series 4.5%, HW5 Series 4.5%, HW8 Series 4.5%, L Series 3.3%, L5 Series 3.3%, L8 Series 3.3%, N Series 3.3%, N5 Series 3.3%, N8 Series 3.3%, D5 Series 3.3%, D8 Series 3.3%, QF Series 3.3%, QF5 Series 3.3%, QFW Series 4.5%, QFW5 Series 4.5%.
- (5) The return of the S&P/TSX Composite Index since inception for each applicable series is as follows: Q Series (formerly Quadrus Series) 9.1%, H Series 9.1%, H5 Series 9.1%, H8 Series 9.1%, HW Series 8.8%, HW5 Series 8.8%, HW8 Series 8.8%, L Series 9.1%, L5 Series 9.1%, L8 Series 9.1%, N Series 9.1%, N5 Series 9.1%, N8 Series 9.1%, D5 Series 9.1%, D8 Series 9.1%, QF Series 9.1%, QF5 Series 9.1%, QFW Series 8.8%, QFW5 Series 8.8%.
- (6) The return of the S&P 500 Index since inception for each applicable series is as follows: Q Series (formerly Quadrus Series) 15.8%, H Series 15.8%, H5 Series 15.8%, H8 Series 15.8%, HW Series 13.8%, HW5 Series 13.8%, HW8 Series 13.8%, L Series 15.8%, L5 Series 15.8%, L8 Series 15.8%, N Series 15.8%, N5 Series 15.8%, N8 Series 15.8%, D5 Series 15.8%, D8 Series 15.8%, QF Series 15.8%, QF5 Series 15.8%, QFW Series 13.8%, QFW5 Series 13.8%.
- (7) The return of the MSCI EAFE (Net) Index since inception for each applicable series is as follows: Q Series (formerly Quadrus Series) 6.3%, H Series 6.3%, H5 Series 6.3%, H8 Series 6.3%, HW Series 5.1%, HW5 Series 5.1%, HW8 Series 5.1%, L Series 6.3%, L5 Series 6.3%, L8 Series 6.3%, N Series 6.3%, N5 Series 6.3%, N8 Series 6.3%, D5 Series 6.3%, D8 Series 6.3%, QF Series 6.3%, QF5 Series 6.3%, QFW Series 5.1%, QFW5 Series 5.1%.

# CANADA LIFE GROWTH AND INCOME FUND (GWLIM)

(Formerly Growth and Income Fund (GWLIM))

ANNUAL MANAGEMENT REPORT OF FUND PERFORMANCE | For the Year Ended March 31, 2021

## Summary of Investment Portfolio at March 31, 2021

<i>Effective Portfolio Allocation</i>	<i>% of NAV</i>
Equities	59.9
Bonds	36.9
Cash and short-term investments	5.1
Other assets (liabilities)	(1.9)
<b>Effective Regional Allocation</b>	
	<b>% of NAV</b>
Canada	63.8
United States	25.0
Cash and short-term investments	5.1
United Kingdom	1.8
Ireland	1.3
Switzerland	1.1
France	0.7
Hong Kong	0.6
Belgium	0.4
Japan	0.4
Germany	0.3
Australia	0.3
South Korea	0.3
Thailand	0.3
Other	0.3
Sweden	0.2
Other assets (liabilities)	(1.9)
<b>Effective Sector Allocation</b>	
	<b>% of NAV</b>
Corporate bonds	19.6
Financials	15.5
Information technology	10.0
Federal bonds	9.6
Industrials	8.8
Provincial bonds	7.3
Health care	5.3
Cash and short-term investments	5.1
Energy	3.8
Consumer discretionary	3.7
Communication services	3.6
Consumer staples	3.5
Utilities	2.3
Materials	2.0
Real estate	1.4
Other	0.4
Other assets (liabilities)	(1.9)

The effective allocation shows the portfolio, regional or sector exposure of the Fund calculated by combining its direct and indirect investments.

The Fund's foreign currency exposure was not hedged at the end of the period.

## Top 25 Positions

<b>Issuer/Underlying Fund</b>	<b>% of NAV</b>
Canada Life Core Bond Fund (Portico) Series R	39.7
Canada Life Dividend Fund (GWLIM) Series R	20.1
Canada Life US Equity Fund (London Capital) Series R	16.3
Canada Life Canadian Growth Fund (GWLIM) Series R	10.0
Canada Life US Dividend Fund (GWLIM) Series R	8.1
Groupe Bruxelles Lambert SA <sup>(1)</sup>	0.4
DCC PLC	0.3
Samsung Electronics Co. Ltd.	0.3
Coca-Cola Amatil Ltd.	0.3
Alcon Inc.	0.2
Ryanair Holdings PLC	0.2
Alfresa Holdings Corp.	0.2
Thai Beverage PCL	0.2
Telefonaktiebolaget LM Ericsson	0.2
Unilever PLC	0.2
Diageo PLC	0.2
GEA Group AG	0.2
Sanofi	0.2
GlaxoSmithKline PLC	0.2
Novartis AG	0.2
Bank Leumi Le-Israel	0.2
Melrose Industries PLC	0.2
CRH PLC	0.2
Bank of Ireland Group PLC	0.2
United Utilities Group PLC	0.2

## Top long positions as a percentage of total net asset value

**98.7**

(1) The issuer of this security is related to CLIML.

The Fund held no direct short positions at the end of the period.

For the prospectus and other information about the underlying fund(s) held in the portfolio, visit [www.canadalifeinvest.ca](http://www.canadalifeinvest.ca) or [www.sedar.com](http://www.sedar.com).

The investments and percentages may have changed since March 31, 2021, due to the ongoing portfolio transactions of the Fund. Quarterly updates of holdings are available within 60 days of the end of each quarter except for March 31, the Fund's fiscal year-end, when they are available within 90 days.



# CANADA LIFE GROWTH AND INCOME FUND (GWLIM)

(Formerly Growth and Income Fund (GWLIM))

ANNUAL MANAGEMENT REPORT OF FUND PERFORMANCE | For the Year Ended March 31, 2021

## Financial Highlights

The following tables show selected key financial information about the Fund and are intended to help you understand the Fund's financial performance for each of the fiscal periods presented below. If during the period a fund or series was established or reinstated, "period" represents the period from inception or reinstatement to the end of that fiscal period. Series inception or reinstatement dates can be found under *Fund Formation and Series Information*.

### THE FUND'S NET ASSETS PER SECURITY (\$)¹

	Mar. 31 2021	Mar. 31 2020	Mar. 31 2019	Mar. 31 2018
<b>Q Series (formerly Quadrus Series)</b>				
<b>Net assets, beginning of period</b>	9.72	10.37	10.06	10.00
<b>Increase (decrease) from operations:</b>				
Total revenue	0.26	0.27	0.25	0.21
Total expenses	(0.26)	(0.26)	(0.22)	(0.16)
Realized gains (losses) for the period	0.57	0.12	0.02	0.15
Unrealized gains (losses) for the period	0.77	(1.06)	0.30	–
<b>Total increase (decrease) from operations²</b>	1.34	(0.93)	0.35	0.20
<b>Distributions:</b>				
From net investment income (excluding Canadian dividends)	(0.04)	(0.01)	(0.02)	–
From Canadian dividends	(0.02)	(0.01)	(0.02)	(0.04)
From capital gains	–	–	(0.02)	(0.11)
Return of capital	–	–	–	–
<b>Total annual distributions³</b>	(0.06)	(0.02)	(0.06)	(0.15)
<b>Net assets, end of period</b>	11.29	9.72	10.37	10.06
<b>H Series</b>				
<b>Net assets, beginning of period</b>	9.80	10.41	10.09	10.00
<b>Increase (decrease) from operations:</b>				
Total revenue	0.22	0.26	0.26	0.18
Total expenses	(0.13)	(0.14)	(0.13)	(0.09)
Realized gains (losses) for the period	0.70	(0.17)	(0.12)	(0.61)
Unrealized gains (losses) for the period	0.65	(1.01)	0.30	–
<b>Total increase (decrease) from operations²</b>	1.44	(1.06)	0.31	(0.52)
<b>Distributions:</b>				
From net investment income (excluding Canadian dividends)	(0.10)	(0.06)	(0.05)	(0.01)
From Canadian dividends	(0.07)	(0.05)	(0.06)	(0.05)
From capital gains	–	–	(0.05)	(0.14)
Return of capital	–	–	–	–
<b>Total annual distributions³</b>	(0.17)	(0.11)	(0.16)	(0.20)
<b>Net assets, end of period</b>	11.40	9.80	10.41	10.09

	Mar. 31 2021	Mar. 31 2020	Mar. 31 2019	Mar. 31 2018
<b>H5 Series</b>				
<b>Net assets, beginning of period</b>	12.87	14.33	14.60	15.00
<b>Increase (decrease) from operations:</b>				
Total revenue	0.23	0.41	0.36	0.31
Total expenses	(0.16)	(0.15)	(0.16)	(0.10)
Realized gains (losses) for the period	1.67	2.74	(0.21)	0.25
Unrealized gains (losses) for the period	0.68	(1.63)	0.42	–
<b>Total increase (decrease) from operations²</b>	2.42	1.37	0.41	0.46
<b>Distributions:</b>				
From net investment income (excluding Canadian dividends)	(0.17)	(0.08)	(0.09)	(0.01)
From Canadian dividends	(0.11)	(0.08)	(0.08)	(0.07)
From capital gains	–	–	(0.07)	(0.21)
Return of capital	(0.72)	(0.69)	(0.71)	(0.55)
<b>Total annual distributions³</b>	(1.00)	(0.85)	(0.95)	(0.84)
<b>Net assets, end of period</b>	14.17	12.87	14.33	14.60
<b>H8 Series</b>				
<b>Net assets, beginning of period</b>	11.75	13.53	14.27	15.00
<b>Increase (decrease) from operations:</b>				
Total revenue	0.21	0.35	0.35	0.30
Total expenses	(0.15)	(0.10)	(0.10)	(0.10)
Realized gains (losses) for the period	0.84	0.54	0.08	0.26
Unrealized gains (losses) for the period	0.60	(1.36)	0.41	–
<b>Total increase (decrease) from operations²</b>	1.50	(0.57)	0.74	0.46
<b>Distributions:</b>				
From net investment income (excluding Canadian dividends)	(0.14)	(0.10)	(0.09)	(0.01)
From Canadian dividends	(0.09)	(0.09)	(0.11)	(0.07)
From capital gains	–	–	(0.09)	(0.21)
Return of capital	(1.05)	(1.04)	(1.12)	(0.88)
<b>Total annual distributions³</b>	(1.28)	(1.23)	(1.41)	(1.17)
<b>Net assets, end of period</b>	12.55	11.75	13.53	14.27

(1) These calculations are prescribed by securities regulations and are not intended to be a reconciliation between opening and closing net assets per security. This information is derived from the Fund's audited annual financial statements. The net assets per security presented in the financial statements may differ from the net asset value per security calculated for fund pricing purposes. An explanation of these differences, if any, can be found in the *Notes to Financial Statements*.

(2) Net assets and distributions are based on the actual number of securities outstanding at the relevant time. The increase/decrease from operations is based on the weighted average number of securities outstanding over the fiscal period.

(3) Distributions were paid in cash/reinvested in additional securities of the Fund, or both.

# CANADA LIFE GROWTH AND INCOME FUND (GWLIM)

(Formerly Growth and Income Fund (GWLIM))

ANNUAL MANAGEMENT REPORT OF FUND PERFORMANCE | For the Year Ended March 31, 2021

## THE FUND'S NET ASSETS PER SECURITY (\$)¹ (cont'd)

HW Series	Mar. 31 2021	Mar. 31 2020	Mar. 31 2019	Mar. 31 2018
<b>Net assets, beginning of period</b>	<b>9.43</b>	10.01	10.00	n/a
<b>Increase (decrease) from operations:</b>				
Total revenue	<b>0.21</b>	0.25	0.16	n/a
Total expenses	<b>(0.30)</b>	(0.10)	(0.06)	n/a
Realized gains (losses) for the period	<b>0.87</b>	(0.71)	1.53	n/a
Unrealized gains (losses) for the period	<b>0.60</b>	(0.97)	0.19	n/a
<b>Total increase (decrease) from operations²</b>	<b>1.38</b>	(1.53)	1.82	n/a
<b>Distributions:</b>				
From net investment income (excluding Canadian dividends)	<b>(0.12)</b>	(0.07)	(0.06)	n/a
From Canadian dividends	<b>(0.07)</b>	(0.06)	(0.08)	n/a
From capital gains	–	–	(0.06)	n/a
Return of capital	–	–	–	n/a
<b>Total annual distributions³</b>	<b>(0.19)</b>	(0.13)	(0.20)	n/a
<b>Net assets, end of period</b>	<b>10.98</b>	9.43	10.01	n/a

HW5 Series	Mar. 31 2021	Mar. 31 2020	Mar. 31 2019	Mar. 31 2018
<b>Net assets, beginning of period</b>	<b>13.06</b>	14.52	15.00	n/a
<b>Increase (decrease) from operations:</b>				
Total revenue	<b>0.44</b>	0.33	0.24	n/a
Total expenses	<b>(0.13)</b>	(0.14)	(0.07)	n/a
Realized gains (losses) for the period	<b>0.46</b>	(1.20)	(0.11)	n/a
Unrealized gains (losses) for the period	<b>1.28</b>	(1.29)	0.28	n/a
<b>Total increase (decrease) from operations²</b>	<b>2.05</b>	(2.30)	0.34	n/a
<b>Distributions:</b>				
From net investment income (excluding Canadian dividends)	<b>(0.16)</b>	(0.09)	(0.10)	n/a
From Canadian dividends	<b>(0.10)</b>	(0.09)	(0.11)	n/a
From capital gains	–	–	(0.09)	n/a
Return of capital	<b>(0.73)</b>	(0.70)	(0.48)	n/a
<b>Total annual distributions³</b>	<b>(0.99)</b>	(0.88)	(0.78)	n/a
<b>Net assets, end of period</b>	<b>14.43</b>	13.06	14.52	n/a

HW8 Series	Mar. 31 2021	Mar. 31 2020	Mar. 31 2019	Mar. 31 2018
<b>Net assets, beginning of period</b>	<b>12.41</b>	14.23	15.00	n/a
<b>Increase (decrease) from operations:</b>				
Total revenue	<b>0.21</b>	0.36	0.23	n/a
Total expenses	<b>(0.12)</b>	(0.11)	(0.07)	n/a
Realized gains (losses) for the period	<b>0.97</b>	0.57	(0.10)	n/a
Unrealized gains (losses) for the period	<b>0.62</b>	(1.43)	0.27	n/a
<b>Total increase (decrease) from operations²</b>	<b>1.68</b>	(0.61)	0.33	n/a
<b>Distributions:</b>				
From net investment income (excluding Canadian dividends)	<b>(0.16)</b>	(0.10)	(0.10)	n/a
From Canadian dividends	<b>(0.10)</b>	(0.09)	(0.11)	n/a
From capital gains	–	–	(0.09)	n/a
Return of capital	<b>(1.11)</b>	(1.09)	(0.77)	n/a
<b>Total annual distributions³</b>	<b>(1.37)</b>	(1.28)	(1.07)	n/a
<b>Net assets, end of period</b>	<b>13.28</b>	12.41	14.23	n/a

L Series	Mar. 31 2021	Mar. 31 2020	Mar. 31 2019	Mar. 31 2018
<b>Net assets, beginning of period</b>	<b>9.79</b>	10.42	10.08	10.00
<b>Increase (decrease) from operations:</b>				
Total revenue	<b>0.21</b>	0.26	0.26	0.18
Total expenses	<b>(0.23)</b>	(0.22)	(0.20)	(0.14)
Realized gains (losses) for the period	<b>0.71</b>	(0.43)	0.07	(0.26)
Unrealized gains (losses) for the period	<b>0.62</b>	(1.04)	0.30	–
<b>Total increase (decrease) from operations²</b>	<b>1.31</b>	(1.43)	0.43	(0.22)
<b>Distributions:</b>				
From net investment income (excluding Canadian dividends)	<b>(0.05)</b>	(0.02)	(0.02)	(0.01)
From Canadian dividends	<b>(0.03)</b>	(0.02)	(0.03)	(0.04)
From capital gains	–	–	(0.02)	(0.11)
Return of capital	–	–	–	–
<b>Total annual distributions³</b>	<b>(0.08)</b>	(0.04)	(0.07)	(0.16)
<b>Net assets, end of period</b>	<b>11.39</b>	9.79	10.42	10.08

# CANADA LIFE GROWTH AND INCOME FUND (GWLIM)

(Formerly Growth and Income Fund (GWLIM))

ANNUAL MANAGEMENT REPORT OF FUND PERFORMANCE | For the Year Ended March 31, 2021

## THE FUND'S NET ASSETS PER SECURITY (\$)¹ (cont'd)

L5 Series	Mar. 31 2021	Mar. 31 2020	Mar. 31 2019	Mar. 31 2018
<b>Net assets, beginning of period</b>	<b>12.83</b>	14.32	14.56	15.00
<b>Increase (decrease) from operations:</b>				
Total revenue	<b>0.22</b>	0.37	0.36	0.31
Total expenses	<b>(0.29)</b>	(0.26)	(0.26)	(0.20)
Realized gains (losses) for the period	<b>1.04</b>	0.60	0.09	0.25
Unrealized gains (losses) for the period	<b>0.65</b>	(1.46)	0.42	–
<b>Total increase (decrease) from operations²</b>	<b>1.62</b>	(0.75)	0.61	0.36
<b>Distributions:</b>				
From net investment income (excluding Canadian dividends)	<b>(0.08)</b>	(0.04)	(0.04)	(0.01)
From Canadian dividends	<b>(0.05)</b>	(0.05)	(0.05)	(0.06)
From capital gains	–	–	(0.04)	(0.18)
Return of capital	<b>(0.71)</b>	(0.69)	(0.71)	(0.55)
<b>Total annual distributions³</b>	<b>(0.84)</b>	(0.78)	(0.84)	(0.80)
<b>Net assets, end of period</b>	<b>14.16</b>	12.83	14.32	14.56

L8 Series	Mar. 31 2021	Mar. 31 2020	Mar. 31 2019	Mar. 31 2018
<b>Net assets, beginning of period</b>	<b>11.78</b>	13.57	14.24	15.00
<b>Increase (decrease) from operations:</b>				
Total revenue	<b>0.30</b>	0.34	0.35	0.30
Total expenses	<b>(0.26)</b>	(0.27)	(0.25)	(0.20)
Realized gains (losses) for the period	<b>0.68</b>	0.49	0.09	0.26
Unrealized gains (losses) for the period	<b>0.86</b>	(1.35)	0.40	–
<b>Total increase (decrease) from operations²</b>	<b>1.58</b>	(0.79)	0.59	0.36
<b>Distributions:</b>				
From net investment income (excluding Canadian dividends)	<b>(0.06)</b>	(0.02)	(0.03)	(0.01)
From Canadian dividends	<b>(0.04)</b>	(0.03)	(0.05)	(0.06)
From capital gains	–	–	(0.04)	(0.18)
Return of capital	<b>(1.05)</b>	(1.05)	(1.12)	(0.88)
<b>Total annual distributions³</b>	<b>(1.15)</b>	(1.10)	(1.24)	(1.13)
<b>Net assets, end of period</b>	<b>12.60</b>	11.78	13.57	14.24

N Series	Mar. 31 2021	Mar. 31 2020	Mar. 31 2019	Mar. 31 2018
<b>Net assets, beginning of period</b>	<b>9.74</b>	10.31	10.14	10.00
<b>Increase (decrease) from operations:</b>				
Total revenue	<b>0.20</b>	0.27	0.26	0.17
Total expenses	–	(0.01)	(0.01)	(0.01)
Realized gains (losses) for the period	<b>0.74</b>	0.09	(0.17)	(0.40)
Unrealized gains (losses) for the period	<b>0.59</b>	(1.05)	0.30	–
<b>Total increase (decrease) from operations²</b>	<b>1.53</b>	(0.70)	0.38	(0.24)
<b>Distributions:</b>				
From net investment income (excluding Canadian dividends)	<b>(0.18)</b>	(0.10)	(0.14)	(0.01)
From Canadian dividends	<b>(0.11)</b>	(0.10)	(0.15)	(0.06)
From capital gains	–	–	(0.13)	(0.17)
Return of capital	–	–	–	–
<b>Total annual distributions³</b>	<b>(0.29)</b>	(0.20)	(0.42)	(0.24)
<b>Net assets, end of period</b>	<b>11.35</b>	9.74	10.31	10.14

N5 Series	Mar. 31 2021	Mar. 31 2020	Mar. 31 2019	Mar. 31 2018
<b>Net assets, beginning of period</b>	<b>12.93</b>	14.35	14.65	15.00
<b>Increase (decrease) from operations:</b>				
Total revenue	<b>0.23</b>	0.37	0.36	0.31
Total expenses	<b>0.01</b>	(0.01)	(0.01)	(0.01)
Realized gains (losses) for the period	<b>1.05</b>	0.59	0.10	0.25
Unrealized gains (losses) for the period	<b>0.66</b>	(1.47)	0.42	–
<b>Total increase (decrease) from operations²</b>	<b>1.95</b>	(0.52)	0.87	0.55
<b>Distributions:</b>				
From net investment income (excluding Canadian dividends)	<b>(0.23)</b>	(0.13)	(0.13)	(0.01)
From Canadian dividends	<b>(0.15)</b>	(0.14)	(0.16)	(0.09)
From capital gains	–	–	(0.13)	(0.25)
Return of capital	<b>(0.72)</b>	(0.69)	(0.72)	(0.55)
<b>Total annual distributions³</b>	<b>(1.10)</b>	(0.96)	(1.14)	(0.90)
<b>Net assets, end of period</b>	<b>14.31</b>	12.93	14.35	14.65

# CANADA LIFE GROWTH AND INCOME FUND (GWLIM)

(Formerly Growth and Income Fund (GWLIM))

ANNUAL MANAGEMENT REPORT OF FUND PERFORMANCE | For the Year Ended March 31, 2021

## THE FUND'S NET ASSETS PER SECURITY (\$)¹ (cont'd)

	Mar. 31 2021	Mar. 31 2020	Mar. 31 2019	Mar. 31 2018
<b>N8 Series</b>				
<b>Net assets, beginning of period</b>	11.90	13.61	14.32	15.00
<b>Increase (decrease) from operations:</b>				
Total revenue	0.20	0.35	0.35	0.30
Total expenses	–	(0.01)	(0.01)	(0.01)
Realized gains (losses) for the period	0.93	0.54	0.09	0.25
Unrealized gains (losses) for the period	0.59	(1.37)	0.41	–
<b>Total increase (decrease) from operations²</b>	1.72	(0.49)	0.84	0.54
<b>Distributions:</b>				
From net investment income (excluding Canadian dividends)	(0.21)	(0.13)	(0.12)	–
From Canadian dividends	(0.13)	(0.13)	(0.15)	(0.09)
From capital gains	–	–	(0.13)	(0.25)
Return of capital	(1.07)	(1.04)	(1.12)	(0.88)
<b>Total annual distributions³</b>	(1.41)	(1.30)	(1.52)	(1.22)
<b>Net assets, end of period</b>	12.75	11.90	13.61	14.32

	Mar. 31 2021	Mar. 31 2020	Mar. 31 2019	Mar. 31 2018
<b>D5 Series</b>				
<b>Net assets, beginning of period</b>	12.74	14.26	14.53	15.00
<b>Increase (decrease) from operations:</b>				
Total revenue	0.22	0.37	0.36	0.31
Total expenses	(0.33)	(0.33)	(0.31)	(0.23)
Realized gains (losses) for the period	1.03	1.74	1.19	0.24
Unrealized gains (losses) for the period	0.65	(1.47)	0.41	–
<b>Total increase (decrease) from operations²</b>	1.57	0.31	1.65	0.32
<b>Distributions:</b>				
From net investment income (excluding Canadian dividends)	(0.05)	(0.01)	(0.02)	–
From Canadian dividends	(0.03)	(0.02)	(0.03)	(0.06)
From capital gains	–	–	(0.02)	(0.16)
Return of capital	(0.72)	(0.69)	(0.71)	(0.55)
<b>Total annual distributions³</b>	(0.80)	(0.72)	(0.78)	(0.77)
<b>Net assets, end of period</b>	14.05	12.74	14.26	14.53

	Mar. 31 2021	Mar. 31 2020	Mar. 31 2019	Mar. 31 2018
<b>D8 Series</b>				
<b>Net assets, beginning of period</b>	11.67	13.49	14.20	15.00
<b>Increase (decrease) from operations:</b>				
Total revenue	0.20	0.34	0.35	0.30
Total expenses	(0.30)	(0.28)	(0.29)	(0.23)
Realized gains (losses) for the period	0.99	0.55	0.09	0.25
Unrealized gains (losses) for the period	0.58	(1.35)	0.40	–
<b>Total increase (decrease) from operations²</b>	1.47	(0.74)	0.55	0.32
<b>Distributions:</b>				
From net investment income (excluding Canadian dividends)	(0.05)	(0.02)	(0.02)	(0.02)
From Canadian dividends	(0.03)	(0.03)	(0.03)	(0.05)
From capital gains	–	–	(0.02)	(0.16)
Return of capital	(1.05)	(1.04)	(1.12)	(0.87)
<b>Total annual distributions³</b>	(1.13)	(1.09)	(1.19)	(1.10)
<b>Net assets, end of period</b>	12.44	11.67	13.49	14.20

	Mar. 31 2021	Mar. 31 2020	Mar. 31 2019	Mar. 31 2018
<b>QF Series</b>				
<b>Net assets, beginning of period</b>	9.81	10.42	10.09	10.00
<b>Increase (decrease) from operations:</b>				
Total revenue	0.39	0.27	0.26	0.19
Total expenses	(0.14)	(0.14)	(0.13)	(0.10)
Realized gains (losses) for the period	0.22	0.30	0.34	(0.02)
Unrealized gains (losses) for the period	1.13	(1.07)	0.30	–
<b>Total increase (decrease) from operations²</b>	1.60	(0.64)	0.77	0.07
<b>Distributions:</b>				
From net investment income (excluding Canadian dividends)	(0.10)	(0.05)	(0.05)	–
From Canadian dividends	(0.06)	(0.05)	(0.05)	(0.05)
From capital gains	–	–	(0.04)	(0.14)
Return of capital	–	–	–	–
<b>Total annual distributions³</b>	(0.16)	(0.10)	(0.14)	(0.19)
<b>Net assets, end of period</b>	11.41	9.81	10.42	10.09

# CANADA LIFE GROWTH AND INCOME FUND (GWLIM)

(Formerly Growth and Income Fund (GWLIM))

ANNUAL MANAGEMENT REPORT OF FUND PERFORMANCE | For the Year Ended March 31, 2021

## THE FUND'S NET ASSETS PER SECURITY (\$)¹ (cont'd)

QF5 Series	Mar. 31 2021	Mar. 31 2020	Mar. 31 2019	Mar. 31 2018
<b>Net assets, beginning of period</b>	<b>12.85</b>	14.32	14.58	15.00
<b>Increase (decrease) from operations:</b>				
Total revenue	<b>0.67</b>	0.33	0.36	0.31
Total expenses	<b>(0.18)</b>	(0.19)	(0.21)	(0.16)
Realized gains (losses) for the period	<b>(0.21)</b>	(0.40)	0.09	0.25
Unrealized gains (losses) for the period	<b>1.96</b>	(1.30)	0.42	–
<b>Total increase (decrease) from operations²</b>	<b>2.24</b>	(1.56)	0.66	0.40
<b>Distributions:</b>				
From net investment income (excluding Canadian dividends)	<b>(0.13)</b>	(0.07)	(0.06)	–
From Canadian dividends	<b>(0.08)</b>	(0.07)	(0.07)	(0.07)
From capital gains	–	–	(0.06)	(0.20)
Return of capital	<b>(0.72)</b>	(0.69)	(0.71)	(0.55)
<b>Total annual distributions³</b>	<b>(0.93)</b>	(0.83)	(0.90)	(0.82)
<b>Net assets, end of period</b>	<b>14.18</b>	12.85	14.32	14.58

QFW Series	Mar. 31 2021	Mar. 31 2020	Mar. 31 2019	Mar. 31 2018
<b>Net assets, beginning of period</b>	<b>9.45</b>	10.03	10.00	n/a
<b>Increase (decrease) from operations:</b>				
Total revenue	<b>0.25</b>	0.25	0.16	n/a
Total expenses	<b>(0.10)</b>	(0.11)	(0.06)	n/a
Realized gains (losses) for the period	<b>0.58</b>	(0.32)	0.47	n/a
Unrealized gains (losses) for the period	<b>0.72</b>	(1.00)	0.19	n/a
<b>Total increase (decrease) from operations²</b>	<b>1.45</b>	(1.18)	0.76	n/a
<b>Distributions:</b>				
From net investment income (excluding Canadian dividends)	<b>(0.12)</b>	(0.06)	(0.05)	n/a
From Canadian dividends	<b>(0.07)</b>	(0.06)	(0.07)	n/a
From capital gains	–	–	(0.06)	n/a
Return of capital	–	–	–	n/a
<b>Total annual distributions³</b>	<b>(0.19)</b>	(0.12)	(0.18)	n/a
<b>Net assets, end of period</b>	<b>11.01</b>	9.45	10.03	n/a

QFW5 Series	Mar. 31 2021	Mar. 31 2020	Mar. 31 2019	Mar. 31 2018
<b>Net assets, beginning of period</b>	<b>13.05</b>	14.52	15.00	n/a
<b>Increase (decrease) from operations:</b>				
Total revenue	<b>0.74</b>	0.35	0.24	n/a
Total expenses	<b>(0.12)</b>	(0.12)	(0.07)	n/a
Realized gains (losses) for the period	<b>0.66</b>	(6.83)	(0.11)	n/a
Unrealized gains (losses) for the period	<b>2.15</b>	(1.36)	0.28	n/a
<b>Total increase (decrease) from operations²</b>	<b>3.43</b>	(7.96)	0.34	n/a
<b>Distributions:</b>				
From net investment income (excluding Canadian dividends)	<b>(0.17)</b>	(0.10)	(0.10)	n/a
From Canadian dividends	<b>(0.10)</b>	(0.10)	(0.11)	n/a
From capital gains	–	–	(0.09)	n/a
Return of capital	<b>(0.73)</b>	(0.70)	(0.48)	n/a
<b>Total annual distributions³</b>	<b>(1.00)</b>	(0.90)	(0.78)	n/a
<b>Net assets, end of period</b>	<b>14.43</b>	13.05	14.52	n/a

# CANADA LIFE GROWTH AND INCOME FUND (GWLIM)

(Formerly Growth and Income Fund (GWLIM))

ANNUAL MANAGEMENT REPORT OF FUND PERFORMANCE | For the Year Ended March 31, 2021

## RATIOS AND SUPPLEMENTAL DATA

	Mar. 31 2021	Mar. 31 2020	Mar. 31 2019	Mar. 31 2018
<b>Q Series (formerly Quadrus Series)</b>				
Total net asset value (\$000) <sup>1</sup>	55,391	10,595	7,642	12,917
Securities outstanding (000) <sup>1</sup>	4,904	1,090	737	1,284
Management expense ratio (%) <sup>2</sup>	2.46	2.43	2.36	2.32
Management expense ratio before waivers or absorptions (%) <sup>2</sup>	2.46	2.43	2.36	2.32
Trading expense ratio (%) <sup>3</sup>	0.03	0.07	0.08	0.14
Portfolio turnover rate (%) <sup>4</sup>	54.21	17.46	29.92	n/a
Net asset value per security (\$)	11.29	9.72	10.37	10.06

	Mar. 31 2021	Mar. 31 2020	Mar. 31 2019	Mar. 31 2018
<b>H Series</b>				
Total net asset value (\$000) <sup>1</sup>	2,943	312	99	87
Securities outstanding (000) <sup>1</sup>	258	32	10	9
Management expense ratio (%) <sup>2</sup>	1.30	1.30	1.25	1.21
Management expense ratio before waivers or absorptions (%) <sup>2</sup>	1.30	1.30	1.25	1.21
Trading expense ratio (%) <sup>3</sup>	0.03	0.07	0.08	0.14
Portfolio turnover rate (%) <sup>4</sup>	54.21	17.46	29.92	n/a
Net asset value per security (\$)	11.40	9.80	10.41	10.10

	Mar. 31 2021	Mar. 31 2020	Mar. 31 2019	Mar. 31 2018
<b>H5 Series</b>				
Total net asset value (\$000) <sup>1</sup>	24	1	90	1
Securities outstanding (000) <sup>1</sup>	2	–	6	–
Management expense ratio (%) <sup>2</sup>	1.24	1.21	1.21	1.22
Management expense ratio before waivers or absorptions (%) <sup>2</sup>	1.24	1.22	1.21	1.22
Trading expense ratio (%) <sup>3</sup>	0.03	0.07	0.08	0.14
Portfolio turnover rate (%) <sup>4</sup>	54.21	17.46	29.92	n/a
Net asset value per security (\$)	14.17	12.87	14.33	14.60

	Mar. 31 2021	Mar. 31 2020	Mar. 31 2019	Mar. 31 2018
<b>H8 Series</b>				
Total net asset value (\$000) <sup>1</sup>	194	1	1	1
Securities outstanding (000) <sup>1</sup>	15	–	–	–
Management expense ratio (%) <sup>2</sup>	1.25	1.21	1.22	1.22
Management expense ratio before waivers or absorptions (%) <sup>2</sup>	1.25	1.21	1.22	1.22
Trading expense ratio (%) <sup>3</sup>	0.03	0.07	0.08	0.14
Portfolio turnover rate (%) <sup>4</sup>	54.21	17.46	29.92	n/a
Net asset value per security (\$)	12.55	11.75	13.53	14.27

	Mar. 31 2021	Mar. 31 2020	Mar. 31 2019	Mar. 31 2018
<b>HW Series</b>				
Total net asset value (\$000) <sup>1</sup>	2,945	132	27	n/a
Securities outstanding (000) <sup>1</sup>	268	14	3	n/a
Management expense ratio (%) <sup>2</sup>	0.96	0.91	0.89	n/a
Management expense ratio before waivers or absorptions (%) <sup>2</sup>	0.96	0.91	0.89	n/a
Trading expense ratio (%) <sup>3</sup>	0.03	0.07	0.08	n/a
Portfolio turnover rate (%) <sup>4</sup>	54.21	17.46	29.92	n/a
Net asset value per security (\$)	10.98	9.43	10.01	n/a

	Mar. 31 2021	Mar. 31 2020	Mar. 31 2019	Mar. 31 2018
<b>HW5 Series</b>				
Total net asset value (\$000) <sup>1</sup>	464	154	1	n/a
Securities outstanding (000) <sup>1</sup>	32	12	–	n/a
Management expense ratio (%) <sup>2</sup>	0.94	0.89	0.89	n/a
Management expense ratio before waivers or absorptions (%) <sup>2</sup>	0.94	0.89	0.90	n/a
Trading expense ratio (%) <sup>3</sup>	0.03	0.07	0.08	n/a
Portfolio turnover rate (%) <sup>4</sup>	54.21	17.46	29.92	n/a
Net asset value per security (\$)	14.43	13.06	14.52	n/a

	Mar. 31 2021	Mar. 31 2020	Mar. 31 2019	Mar. 31 2018
<b>HW8 Series</b>				
Total net asset value (\$000) <sup>1</sup>	390	1	1	n/a
Securities outstanding (000) <sup>1</sup>	29	–	–	n/a
Management expense ratio (%) <sup>2</sup>	0.91	0.90	0.89	n/a
Management expense ratio before waivers or absorptions (%) <sup>2</sup>	0.91	0.90	0.90	n/a
Trading expense ratio (%) <sup>3</sup>	0.03	0.07	0.08	n/a
Portfolio turnover rate (%) <sup>4</sup>	54.21	17.46	29.92	n/a
Net asset value per security (\$)	13.28	12.41	14.23	n/a

- (1) This information is provided as at the end of the fiscal period shown.
- (2) Management expense ratio is based on total expenses (excluding commissions and other portfolio transaction costs, income taxes and withholding taxes) for the stated period and is expressed as an annualized percentage of daily average net asset value during the period. If in the period a series was established or reinstated, the management expense ratio is annualized from the date of inception or reinstatement. Mackenzie/CLIML may waive or absorb operating expenses at its discretion and stop waiving or absorbing such expenses at any time without notice.
- (3) The trading expense ratio represents total commissions and other portfolio transaction costs expressed as an annualized percentage of daily average net asset value during the period.
- (4) The Fund's portfolio turnover rate indicates how actively the Fund's portfolio advisor manages its portfolio investments. A portfolio turnover rate of 100% is equivalent to the Fund buying and selling all of the securities in its portfolio once in the course of the period. The higher a fund's portfolio turnover rate in a period, the greater the trading costs payable by the fund in the period, and the greater the chance of an investor receiving taxable capital gains in the year. There is not necessarily a relationship between a high turnover rate and the performance of a fund. The portfolio turnover rate is not provided when the Fund is less than one year old. The value of any trades to realign the Fund's portfolio after a fund merger, if any, is excluded from the portfolio turnover rate.

# CANADA LIFE GROWTH AND INCOME FUND (GWLIM)

(Formerly Growth and Income Fund (GWLIM))

ANNUAL MANAGEMENT REPORT OF FUND PERFORMANCE | For the Year Ended March 31, 2021

## RATIOS AND SUPPLEMENTAL DATA (cont'd)

	Mar. 31	Mar. 31	Mar. 31	Mar. 31
	2021	2020	2019	2018
<b>L Series</b>				
Total net asset value (\$000) <sup>1</sup>	62,810	3,970	1,597	713
Securities outstanding (000) <sup>1</sup>	5,512	405	153	71
Management expense ratio (%) <sup>2</sup>	2.06	2.05	1.99	1.94
Management expense ratio before waivers or absorptions (%) <sup>2</sup>	2.06	2.05	1.99	1.94
Trading expense ratio (%) <sup>3</sup>	0.03	0.07	0.08	0.14
Portfolio turnover rate (%) <sup>4</sup>	54.21	17.46	29.92	n/a
Net asset value per security (\$)	11.39	9.79	10.42	10.08
<b>L5 Series</b>				
Total net asset value (\$000) <sup>1</sup>	3,089	1	1	1
Securities outstanding (000) <sup>1</sup>	218	–	–	–
Management expense ratio (%) <sup>2</sup>	2.05	1.95	1.96	1.94
Management expense ratio before waivers or absorptions (%) <sup>2</sup>	2.05	1.95	1.96	1.94
Trading expense ratio (%) <sup>3</sup>	0.03	0.07	0.08	0.14
Portfolio turnover rate (%) <sup>4</sup>	54.21	17.46	29.92	n/a
Net asset value per security (\$)	14.16	12.83	14.32	14.56
<b>L8 Series</b>				
Total net asset value (\$000) <sup>1</sup>	1,633	318	1	1
Securities outstanding (000) <sup>1</sup>	130	27	–	–
Management expense ratio (%) <sup>2</sup>	2.09	1.98	1.96	1.94
Management expense ratio before waivers or absorptions (%) <sup>2</sup>	2.09	1.98	1.96	1.94
Trading expense ratio (%) <sup>3</sup>	0.03	0.07	0.08	0.14
Portfolio turnover rate (%) <sup>4</sup>	54.21	17.46	29.92	n/a
Net asset value per security (\$)	12.60	11.78	13.57	14.24
<b>N Series</b>				
Total net asset value (\$000) <sup>1</sup>	106,582	5,764	3,522	1,618
Securities outstanding (000) <sup>1</sup>	9,388	592	342	160
Management expense ratio (%) <sup>2</sup>	–	–	0.01	–
Management expense ratio before waivers or absorptions (%) <sup>2</sup>	–	–	0.01	–
Trading expense ratio (%) <sup>3</sup>	0.03	0.07	0.08	0.14
Portfolio turnover rate (%) <sup>4</sup>	54.21	17.46	29.92	n/a
Net asset value per security (\$)	11.35	9.74	10.31	10.14

	Mar. 31	Mar. 31	Mar. 31	Mar. 31
	2021	2020	2019	2018
<b>N5 Series</b>				
Total net asset value (\$000) <sup>1</sup>	9,223	1	1	1
Securities outstanding (000) <sup>1</sup>	645	–	–	–
Management expense ratio (%) <sup>2</sup>	–	–	0.01	–
Management expense ratio before waivers or absorptions (%) <sup>2</sup>	–	–	0.02	–
Trading expense ratio (%) <sup>3</sup>	0.03	0.07	0.08	0.14
Portfolio turnover rate (%) <sup>4</sup>	54.21	17.46	29.92	n/a
Net asset value per security (\$)	14.31	12.93	14.35	14.65
<b>N8 Series</b>				
Total net asset value (\$000) <sup>1</sup>	17,064	1	1	1
Securities outstanding (000) <sup>1</sup>	1,339	–	–	–
Management expense ratio (%) <sup>2</sup>	–	–	0.01	–
Management expense ratio before waivers or absorptions (%) <sup>2</sup>	–	–	0.02	–
Trading expense ratio (%) <sup>3</sup>	0.03	0.07	0.08	0.14
Portfolio turnover rate (%) <sup>4</sup>	54.21	17.46	29.92	n/a
Net asset value per security (\$)	12.75	11.90	13.61	14.33
<b>D5 Series</b>				
Total net asset value (\$000) <sup>1</sup>	1,503	5	12	1
Securities outstanding (000) <sup>1</sup>	107	–	1	–
Management expense ratio (%) <sup>2</sup>	2.45	2.32	2.33	2.32
Management expense ratio before waivers or absorptions (%) <sup>2</sup>	2.45	2.33	2.33	2.32
Trading expense ratio (%) <sup>3</sup>	0.03	0.07	0.08	0.14
Portfolio turnover rate (%) <sup>4</sup>	54.21	17.46	29.92	n/a
Net asset value per security (\$)	14.05	12.74	14.26	14.53
<b>D8 Series</b>				
Total net asset value (\$000) <sup>1</sup>	907	1	1	1
Securities outstanding (000) <sup>1</sup>	73	–	–	–
Management expense ratio (%) <sup>2</sup>	2.48	2.32	2.33	2.32
Management expense ratio before waivers or absorptions (%) <sup>2</sup>	2.48	2.32	2.34	2.32
Trading expense ratio (%) <sup>3</sup>	0.03	0.07	0.08	0.14
Portfolio turnover rate (%) <sup>4</sup>	54.21	17.46	29.92	n/a
Net asset value per security (\$)	12.44	11.67	13.49	14.20

# CANADA LIFE GROWTH AND INCOME FUND (GWLIM)

(Formerly Growth and Income Fund (GWLIM))

ANNUAL MANAGEMENT REPORT OF FUND PERFORMANCE | For the Year Ended March 31, 2021

## RATIOS AND SUPPLEMENTAL DATA (cont'd)

	Mar. 31 2021	Mar. 31 2020	Mar. 31 2019	Mar. 31 2018
<b>QF Series</b>				
Total net asset value (\$000) <sup>1</sup>	10,018	4,722	3,684	254
Securities outstanding (000) <sup>1</sup>	878	481	354	25
Management expense ratio (%) <sup>2</sup>	1.36	1.35	1.33	1.31
Management expense ratio before waivers or absorptions (%) <sup>2</sup>	1.36	1.35	1.33	1.31
Trading expense ratio (%) <sup>3</sup>	0.03	0.07	0.08	0.14
Portfolio turnover rate (%) <sup>4</sup>	54.21	17.46	29.92	n/a
Net asset value per security (\$)	11.41	9.81	10.42	10.09
<b>QF5 Series</b>				
Total net asset value (\$000) <sup>1</sup>	175	156	1	1
Securities outstanding (000) <sup>1</sup>	12	12	–	–
Management expense ratio (%) <sup>2</sup>	1.38	1.32	1.28	1.27
Management expense ratio before waivers or absorptions (%) <sup>2</sup>	1.38	1.32	1.29	1.27
Trading expense ratio (%) <sup>3</sup>	0.03	0.07	0.08	0.14
Portfolio turnover rate (%) <sup>4</sup>	54.21	17.46	29.92	n/a
Net asset value per security (\$)	14.18	12.85	14.32	14.58
<b>QFW Series</b>				
Total net asset value (\$000) <sup>1</sup>	3,662	532	214	n/a
Securities outstanding (000) <sup>1</sup>	333	56	21	n/a
Management expense ratio (%) <sup>2</sup>	0.95	0.97	0.97	n/a
Management expense ratio before waivers or absorptions (%) <sup>2</sup>	0.95	0.98	0.97	n/a
Trading expense ratio (%) <sup>3</sup>	0.03	0.07	0.08	n/a
Portfolio turnover rate (%) <sup>4</sup>	54.21	17.46	29.92	n/a
Net asset value per security (\$)	11.01	9.45	10.03	n/a
<b>QFW5 Series</b>				
Total net asset value (\$000) <sup>1</sup>	2	9	1	n/a
Securities outstanding (000) <sup>1</sup>	–	1	–	n/a
Management expense ratio (%) <sup>2</sup>	0.89	0.89	0.89	n/a
Management expense ratio before waivers or absorptions (%) <sup>2</sup>	0.89	0.89	0.90	n/a
Trading expense ratio (%) <sup>3</sup>	0.03	0.07	0.08	n/a
Portfolio turnover rate (%) <sup>4</sup>	54.21	17.46	29.92	n/a
Net asset value per security (\$)	14.43	13.05	14.52	n/a

## Management Fees

The management fee for each applicable series is calculated and accrued daily as a percentage of its NAV. The Fund's management fees were used by Mackenzie, in the pre-manager change period, in part to pay GLC Asset Management Group Ltd. and Setanta Asset Management Ltd., both affiliates of Mackenzie, for investment advisory services, including managing the investment portfolio of the Fund and/or the underlying fund(s), as applicable, including providing investment analysis and recommendations, making investment decisions and making brokerage arrangements for the purchase and sale of the investment portfolio. Subsequent to the change in manager, the Fund's management fees were used by CLIML in part to pay Mackenzie and Setanta Asset Management Ltd. for investment advisory services.

Quadrus Investment Services Ltd. ("Quadrus"), an affiliate of CLIML and Mackenzie, is the principal distributor for the Fund and is paid trailing commissions out of the management fees. In the pre-manager change period, Canada Life provided certain services to Mackenzie in connection with Mackenzie's portfolio management activities. Canada Life was responsible for paying certain administrative costs and all sales commissions, trailing commissions and any other compensation (collectively, "distribution-related payments") to registered dealers whose clients invest in the Fund. As such, Quadrus and Canada Life received a portion of the management fees that the Fund paid to Mackenzie. Approximately 77% of the total management fees that Mackenzie received from the Canada Life Mutual Funds during the pre-manager change period was paid under these arrangements.

Subsequent to the change in manager, CLIML used the management fees to fund distribution-related payments to Quadrus and to registered dealers and brokers whose clients invest in the Fund.

Mackenzie and CLIML used approximately 38% of the total management fee revenues received from all Canada Life Mutual Funds during the year to fund distribution-related payments to registered dealers and brokers. In comparison, such distribution-related payments for the Fund represented on average 43% of the management fees paid by all applicable series of the Fund during the year. The actual percentage for each series may be higher or lower than the average depending on the level of trailing commissions and sales commissions paid for that series. The higher proportion of distribution-related payments is primarily attributable to sales commissions related to gross sales of redemption charge securities of the Fund.



# CANADA LIFE GROWTH AND INCOME FUND (GWLIM)

(Formerly Growth and Income Fund (GWLIM))

ANNUAL MANAGEMENT REPORT OF FUND PERFORMANCE | For the Year Ended March 31, 2021

---

## Fund Formation and Series Information

The Fund may have undergone a number of changes, such as a reorganization or a change in manager, mandate or name. A history of the major changes affecting the Fund in the last 10 years can be found in the Fund's Annual Information Form.

Date of Formation June 28, 2017

The Fund may issue an unlimited number of securities of each series. The number of issued and outstanding securities of each series is disclosed in *Financial Highlights*.

**Series Distributed by Quadrus Investment Services Ltd.** (255 Dufferin Ave., London, Ontario, N6A 4K1; 1-888-532-3322; [www.canadalifeinvest.ca](http://www.canadalifeinvest.ca))

Q Series, D5 Series and D8 Series securities are offered to investors investing a minimum of \$500. Investors in D5 Series and D8 Series securities also want to receive a monthly cash flow of 5% or 8% per year, respectively. Before August 14, 2020, Q Series securities were known as Quadrus Series.

H Series, H5 Series and H8 Series securities are offered to investors investing a minimum of \$500, who are enrolled in a Quadrus-sponsored fee-for-service or wrap program and who are subject to an asset-based fee. Investors in H5 Series and H8 Series securities also want to receive a monthly cash flow of 5% or 8% per year, respectively.

HW Series, HW5 Series and HW8 Series securities are offered to high net worth investors investing a minimum of \$100,000 and who have eligible minimum total holdings of \$500,000, who are enrolled in a Quadrus-sponsored fee-for-service or wrap program and who are subject to an asset-based fee. Investors in HW5 Series and HW8 Series securities also want to receive a monthly cash flow of 5% or 8% per year, respectively.

L Series, L5 Series and L8 Series securities are offered to investors investing a minimum of \$100,000 and who have eligible minimum total holdings of \$500,000. Investors in L5 Series and L8 Series securities also want to receive a monthly cash flow of 5% or 8% per year, respectively.

N Series, N5 Series and N8 Series securities are offered to investors investing a minimum of \$100,000, who have eligible minimum total holdings of \$500,000, and who have entered into an N type series account agreement with CLIML and Quadrus. Investors in N5 Series and N8 Series securities also want to receive a monthly cash flow of 5% or 8% per year, respectively.

QF Series and QF5 Series securities are offered to retail investors investing a minimum of \$500. Investors are required to negotiate their advisor service fee, which cannot exceed 1.25%, with their financial advisor. Investors in QF5 Series securities also want to receive a monthly cash flow of 5% per year.

QFW Series and QFW5 Series securities are offered to high net worth investors investing a minimum of \$100,000 and who have eligible minimum total holdings of \$500,000. Investors are required to negotiate their advisor service fee, which cannot exceed 1.25%, with their financial advisor. Investors in QFW5 Series securities also want to receive a monthly cash flow of 5% per year.

An investor in the Fund may choose among different purchase options that are available under each series. These purchase options are a sales charge purchase option, a redemption charge purchase option, a low-load purchase option and a no-load purchase option. The charges under the sales charge purchase option are negotiated by investors with their dealers. The charges under the redemption charge and low-load purchase options are paid to CLIML if an investor redeems securities of the Fund during specific periods. Not all purchase options are available under each series of the Fund, and the charges for each purchase option may vary among the different series. For further details on these purchase options, please refer to the Fund's Simplified Prospectus and Fund Facts.

# CANADA LIFE GROWTH AND INCOME FUND (GWLIM)

(Formerly Growth and Income Fund (GWLIM))

ANNUAL MANAGEMENT REPORT OF FUND PERFORMANCE | For the Year Ended March 31, 2021

## Fund Formation and Series Information (cont'd)

Series	Inception/ Reinstatement Date	Management Fees	Administration Fees
Q Series <sup>(2)</sup>	July 14, 2017	2.00%	0.21%
H Series	July 14, 2017	1.00%	0.15%
H5 Series	July 14, 2017	1.00%	0.15%
H8 Series	July 14, 2017	1.00%	0.15%
HW Series	August 7, 2018	0.70%	0.15%
HW5 Series	August 7, 2018	0.70%	0.15%
HW8 Series	August 7, 2018	0.70%	0.15%
L Series	July 14, 2017	1.70%	0.15%
L5 Series	July 14, 2017	1.70%	0.15%
L8 Series	July 14, 2017	1.70%	0.15%
N Series	July 14, 2017	— <sup>(1)</sup>	— <sup>(1)</sup>
N5 Series	July 14, 2017	— <sup>(1)</sup>	— <sup>(1)</sup>
N8 Series	July 14, 2017	— <sup>(1)</sup>	— <sup>(1)</sup>
D5 Series	July 14, 2017	2.00%	0.21%
D8 Series	July 14, 2017	2.00%	0.21%
QF Series	July 14, 2017	1.00%	0.21%
QF5 Series	July 14, 2017	1.00%	0.21%
QFW Series	August 7, 2018	0.70%	0.15%
QFW5 Series	August 7, 2018	0.70%	0.15%

(1) This fee is negotiable and payable directly to CLIML by investors in this series through redemptions of their securities.

(2) Before August 14, 2020, Q Series securities were known as Quadrus Series.