

# CANADA LIFE SHORT TERM BOND FUND (PORTICO)

(Formerly Short Term Bond Fund (Portico))

---

## **Annual Management Report of Fund Performance**

For the Year Ended March 31, 2021

*This Annual Management Report of Fund Performance contains financial highlights but does not contain the complete annual financial statements of the investment fund. You may obtain a copy of the annual financial statements, at no cost, by contacting us using one of the methods noted under Fund Formation and Series Information, by visiting our website at [www.canadalifeinvest.ca](http://www.canadalifeinvest.ca) or by visiting the SEDAR website at [www.sedar.com](http://www.sedar.com).*

*Securityholders may also contact us using one of these methods to request a copy of the investment fund's interim financial report, proxy voting policies and procedures, proxy voting disclosure record or quarterly portfolio disclosure. For more information, please refer to the Fund's Simplified Prospectus, Annual Information Form and Fund Facts, which may also be obtained, at no cost, using any of the methods outlined above.*

*For the Fund's current net asset values per security and for more recent information on general market events, please visit our website.*

### **A NOTE ON FORWARD-LOOKING STATEMENTS**

*This report may contain forward-looking statements that reflect our current expectations or forecasts of future events. Forward-looking statements include statements that are predictive in nature, depend upon or refer to future events or conditions, or include words such as "expects", "anticipates", "intends", "plans", "believes", "estimates", "preliminary", "typical" and other similar expressions. In addition, these statements may relate to future corporate actions, future financial performance of a fund or a security and their future investment strategies and prospects. Forward-looking statements are inherently subject to, among other things, risks, uncertainties and assumptions that could cause actual events, results, performance or prospects to differ materially from those expressed in, or implied by, these forward-looking statements. These risks, uncertainties and assumptions include, without limitation, general economic, political and market factors in North America and internationally, interest and foreign exchange rates, the volatility of global equity and capital markets, business competition, technological change, changes in government regulations, changes in securities laws and regulations, changes in tax laws, unexpected judicial or regulatory proceedings, catastrophic events, outbreaks of disease or pandemics (such as COVID-19), and the ability of Canada Life Investment Management Ltd. to attract or retain key employees. The foregoing list of important risks, uncertainties and assumptions is not exhaustive. Please consider these and other factors carefully and do not place undue reliance on forward-looking statements.*

*The forward-looking information contained in this report is current only as of the date of this report. There should not be an expectation that such information will in all circumstances be updated, supplemented or revised whether as a result of new information, changing circumstances, future events or otherwise.*



™ Canada Life and design are trademarks of The Canada Life Assurance Company.

# CANADA LIFE SHORT TERM BOND FUND (PORTICO)

(Formerly Short Term Bond Fund (Portico))

ANNUAL MANAGEMENT REPORT OF FUND PERFORMANCE | For the Year Ended March 31, 2021

## Management Discussion of Fund Performance

June 3, 2021

This Management Discussion of Fund Performance presents the portfolio management team's view on the significant factors and developments during the period ended March 31, 2021 (the "period"), that have affected the Fund's performance and outlook. If the Fund was established during the period, "period" represents the period from inception to the end of the fiscal period. For information on the Fund's longer-term performance, as applicable, please refer to the *Past Performance* section of the report. In this report, "CLIML" refers to Canada Life Investment Management Ltd., the manager of the Fund. CLIML is wholly owned by The Canada Life Assurance Company ("Canada Life"). CLIML has entered into a fund administration agreement with Mackenzie Financial Corporation ("Mackenzie"), an affiliate of CLIML and Canada Life, for administrative services (see *Recent Developments*). In addition, net asset value ("NAV") refers to the value of the Fund as calculated for transaction purposes, on which the discussion of Fund performance is based.

The Fund is closed to any new investment, except additional purchases by investors who have held securities of the Fund since October 1, 2018.

### Investment Objective and Strategies

The Fund seeks income by investing primarily in high-quality, short-term fixed income securities issued by Canadian federal, provincial or municipal governments or by Canadian corporations, either directly and/or through other mutual funds. The Fund may hold up to 30% of its assets in foreign investments.

### Risk

The risks of the Fund remain as discussed in the Fund's Simplified Prospectus.

The Fund is suitable for short-term investors looking for a Canadian fixed income fund to hold as part of their portfolio, who can handle the volatility of bond markets and who have a low tolerance for risk.

### Results of Operations

#### Investment Performance

The performance of the Fund's Q Series (formerly Quadrus Series) securities is discussed below. The performance of all series is shown in the *Past Performance* section of the report. Where series returns differ, it is primarily because different levels of fees and expenses were charged to each series, or because securities of a series were not issued and outstanding for the entire reporting period. Please refer to the *Fund Formation and Series Information* section of this report for the varying management and administration fees payable by each series.

During the period, the Fund's Q Series securities returned 2.8% (after deducting fees and expenses paid by the series). This compares with a return of 1.6% for the Fund's broad-based index, the FTSE Canada Universe Bond Index, and a return of 2.8% for the Fund's narrow index, the FTSE Canada Short Term Bond Index. All index and series returns are calculated on a total return basis in Canadian dollar terms. Investors cannot invest in an index without incurring fees, expenses and commissions, which are not reflected in the index returns.

To combat economic challenges created by the COVID-19 pandemic, the Bank of Canada maintained extraordinary monetary and fiscal policy measures during the period. These measures included keeping its policy interest rate at 0.25% and making substantial bond purchases. Toward the end of the period, yields on 10-year government bonds increased to pre-pandemic levels. Despite a stronger near-term economic outlook at the end of the period, the central bank indicated willingness to maintain the pace of its asset purchase program.

The Fund outperformed the broad-based index, with overweight exposure to corporate bonds contributing to performance. Among corporate bonds, security selection in the real estate sector detracted from performance. Given the Fund's mandate, the return of the narrow index is a more meaningful comparison.

The Fund performed in line with the narrow index, with its shorter duration overall contributing to performance. Overweight exposure to corporate bonds in the financial and real estate sectors also contributed to performance. Conversely, a shorter duration in federal bonds detracted from performance relative to the narrow index.

Over the period, neither portfolio activity nor market developments significantly changed the positioning of the Fund.

### Net Assets

The Fund's NAV increased by 0.1% to \$27.42 million at March 31, 2021, from \$27.41 million at March 31, 2020. This change was composed primarily of \$1.1 million in net income (including dividend and interest income) from investment performance, after deducting fees and expenses, \$0.7 million in net redemptions, and \$0.4 million in cash distributions.

See *Other Related Party Transactions* for the percentage of the Fund's NAV owned by related parties. As a result of these investments, the Fund is subject to large transaction risk as discussed in the Prospectus. CLIML manages this risk to reduce the possibility of any adverse effect on the Fund or on its investors.

### Fees and Expenses

The management expense ratio ("MER") for Q Series of 1.43% during the year ended March 31, 2021, was unchanged from the MER for the year ended March 31, 2020. The MERs (before and after waivers or absorptions, if any) for all series are presented in the *Financial Highlights* section of this report.

### Recent Developments

Governments worldwide have enacted various measures in seeking to combat the spread of the COVID-19 virus. These measures have led to significant volatility in equity markets and material disruption to businesses globally, resulting in an economic slowdown.

Ongoing uncertainty regarding the duration and long-term impact of the pandemic and the implementation of vaccination programs, as well as the efficacy of government and central bank monetary and fiscal interventions, may continue to affect the Fund's performance in future periods.

# CANADA LIFE SHORT TERM BOND FUND (PORTICO)

(Formerly Short Term Bond Fund (Portico))

ANNUAL MANAGEMENT REPORT OF FUND PERFORMANCE | For the Year Ended March 31, 2021

Over the near term, the portfolio management team expects yields to remain elevated at the longer-term end of the yield curve in response to positive vaccination rates, the expectation of stronger economic growth and potentially higher inflation. The team further expects the Bank of Canada to gradually reduce its asset-purchase program through 2021. In the team's view, fixed income markets may continue to exhibit uncertainty and volatility amid renewed lockdowns that threaten to delay a much-anticipated return to growth. The team believes that issuer selection and credit research will be important to finding attractive opportunities as the economy gains strength.

On August 14, 2020, the Fund was renamed Canada Life Short Term Bond Fund (Portico).

Effective January 1, 2021, the Fund's manager and trustee changed from Mackenzie to CLIML following CLIML's receipt of regulatory approval to be registered as an investment fund manager. This change received a positive recommendation from the Mackenzie Funds' Independent Review Committee ("IRC"). Mackenzie continues to provide certain administrative and transfer agency services to the Fund.

Concurrent with this change, Mackenzie replaced GLC Asset Management Group Ltd. as sub-advisor to the Fund.

Also effective January 1, 2021, the Mackenzie Funds' IRC was replaced by the Canada Life Funds' IRC, which consists of the following three members: Steve Geist (Chair), Joanne De Laurentiis and Linda Currie.

## Related Party Transactions

The following arrangements result in fees paid by the Fund to CLIML or to companies affiliated with the Fund.

## Management and Administration Services

For each applicable series, the Fund paid management fees and administration fees to Mackenzie for the period from April 1 to December 31, 2020 ("the pre-manager change period"), and to CLIML thereafter at the annual rates specified under *Fund Formation and Series Information* in this report and as more fully described in the Prospectus. After the pre-manager change period, CLIML paid the administration fee to Mackenzie for providing day-to-day administration services, including financial reporting, communications to investors and securityholder reporting, maintaining the books and records of the Fund, NAV calculations, and processing orders for securities of the Fund. In return for the administration fees, Mackenzie pays all costs and expenses (other than certain specified fund costs) required to operate the Fund that are not included in management fees. See also *Management Fees*.

## Other Related Party Transactions

Investment funds managed by CLIML and segregated funds managed by Canada Life and its subsidiaries may invest in the Fund on a prospectus-exempt basis in accordance with the investment objectives of those funds. At March 31, 2021, funds managed by CLIML and segregated funds managed by Canada Life owned 72.1% of the Fund's NAV. All related party transactions are based on the NAV per security on each transaction day.

Mackenzie relied on a recommendation issued by the Mackenzie Funds' Independent Review Committee to replace Mackenzie with CLIML as the Fund's manager and trustee in January 2021.

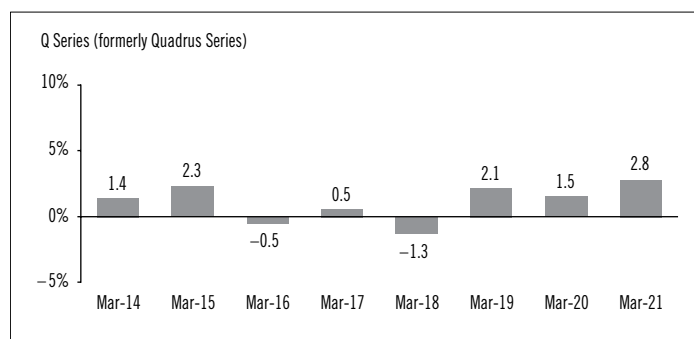
## Past Performance

The Fund's past performance information is presented in the following charts and table. It assumes all distributions made by the Fund in the periods presented are reinvested in additional securities of the relevant series of the Fund. The charts and table do not take into account sales, redemption, distribution or optional charges, or income taxes payable by any investor that would have reduced returns. The past performance of the Fund is not necessarily an indication of how it will perform in the future.

If you hold this Fund outside of a registered plan, income and capital gains distributions paid to you increase your income for tax purposes whether paid to you in cash or reinvested in additional securities of the Fund. The amount of reinvested taxable distributions is added to the adjusted cost base of the securities that you own. This would decrease your capital gain or increase your capital loss when you later redeem from the Fund, thereby ensuring that you are not taxed on this amount again. Please consult your tax advisor regarding your personal tax situation.

## Year-by-Year Returns

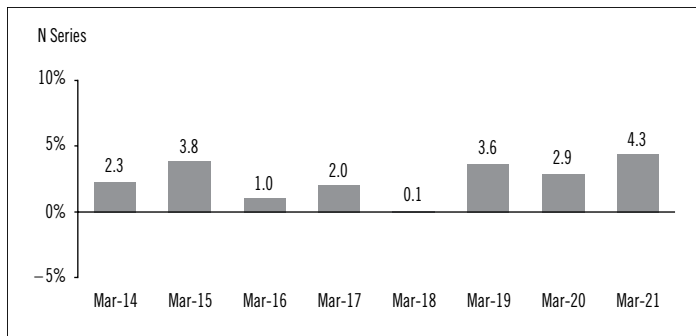
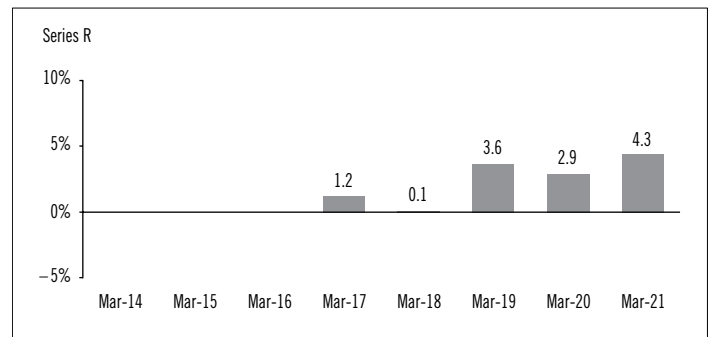
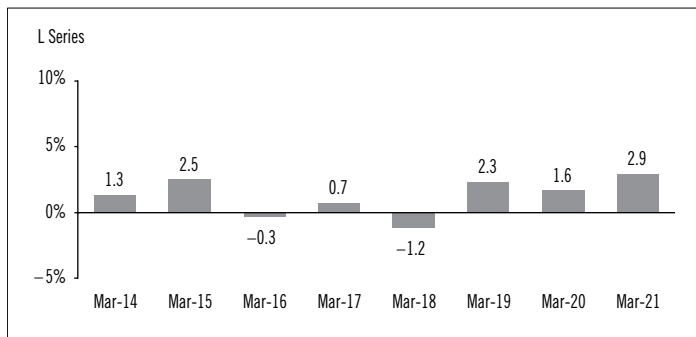
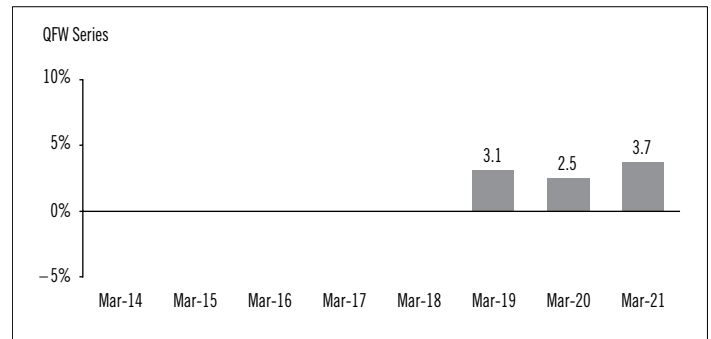
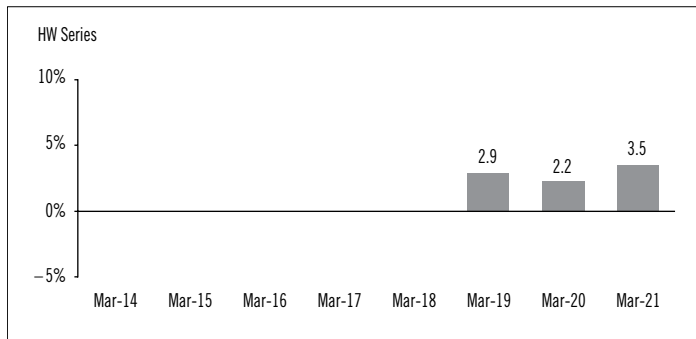
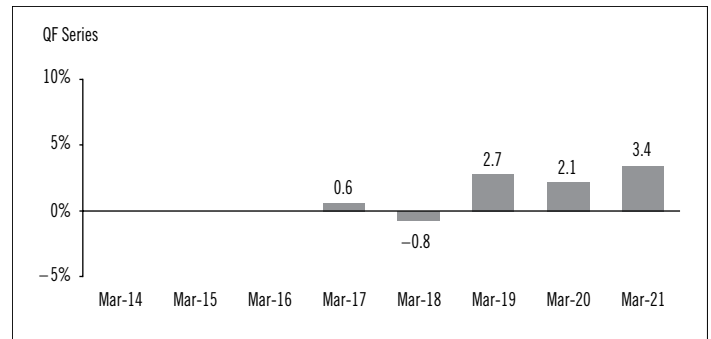
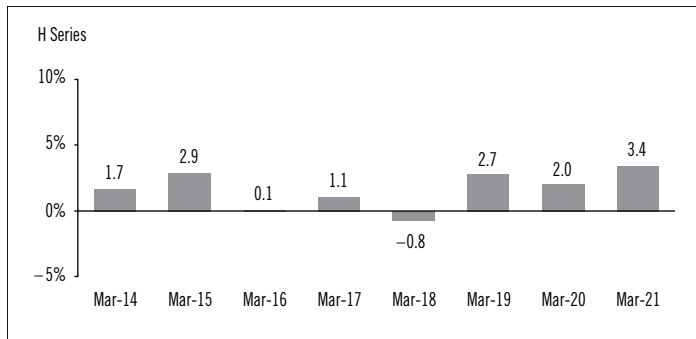
The following bar charts present the performance of each series of the Fund for each of the fiscal periods shown. The charts show, in percentage terms, how much an investment made on the first day of each fiscal period, or on the series inception or reinstatement date, as applicable, would have increased or decreased by the last day of the fiscal period presented. Series inception or reinstatement dates can be found under *Fund Formation and Series Information*.



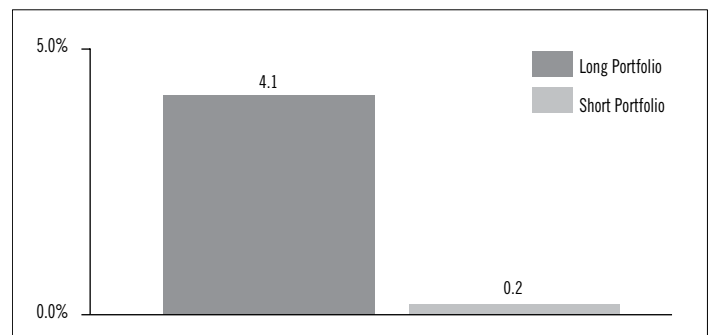
# CANADA LIFE SHORT TERM BOND FUND (PORTICO)

(Formerly Short Term Bond Fund (Portico))

ANNUAL MANAGEMENT REPORT OF FUND PERFORMANCE | For the Year Ended March 31, 2021



The following bar chart presents the performance of the Fund's long and short portfolio positions for the period ended March 31, 2021, before deducting fees and expenses and before the effect of other assets (liabilities).



# CANADA LIFE SHORT TERM BOND FUND (PORTICO)

(Formerly Short Term Bond Fund (Portico))

ANNUAL MANAGEMENT REPORT OF FUND PERFORMANCE | For the Year Ended March 31, 2021

## Annual Compound Returns

The following table compares the historical annual compound total returns for each series of the Fund with the relevant index or indices shown below for each of the periods ended March 31, 2021. Investors cannot invest in an index without incurring fees, expenses and commissions, which are not reflected in these performance figures.

All index returns are calculated in Canadian dollars on a total return basis, meaning that all dividend payments, interest income accruals and interest payments are reinvested.

Percentage Return: <sup>1</sup>	1 Yr	3 Yr	5 Yr	10 Yr	Since Inception <sup>2</sup>
Q Series (formerly Quadrus Series)	2.8	2.1	1.1	n/a	1.1
H Series	3.4	2.7	1.7	n/a	1.7
HW Series	3.5	n/a	n/a	n/a	3.3
L Series	2.9	2.3	1.2	n/a	1.3
N Series	4.3	3.6	2.5	n/a	2.6
QF Series	3.4	2.7	n/a	n/a	1.7
QFW Series	3.7	n/a	n/a	n/a	3.6
Series R	4.3	3.6	n/a	n/a	2.5
FTSE Canada Universe Bond Index*	1.6	3.8	2.8	n/a	Note 3
FTSE Canada Short Term Bond Index	2.8	3.1	2.1	n/a	Note 4

\* Broad-based index

The FTSE Canada Universe Bond Index is a broad measure of Canadian bonds with terms to maturity of more than one year. It includes federal, provincial, municipal and corporate bonds rated "BBB" or higher.

The FTSE Canada Short Term Bond Index is an index of Canadian bonds with terms to maturity of one to five years and rated "BBB" or higher.

- (1) The percentage return differs for each series because the management fee rate and expenses differ for each series.
- (2) The return since inception for each series will differ when the inception date differs and is only provided when a series has been active for a period of less than 10 years.
- (3) The return of the FTSE Canada Universe Bond Index since inception for each applicable series is as follows: Q Series (formerly Quadrus Series) 3.7%, H Series 3.7%, HW Series 4.5%, L Series 3.6%, N Series 3.8%, QF Series 2.4%, QFW Series 4.5%, Series R 2.4%.
- (4) The return of the FTSE Canada Short Term Bond Index since inception for each applicable series is as follows: Q Series (formerly Quadrus Series) 2.3%, H Series 2.3%, HW Series 3.5%, L Series 2.2%, N Series 2.3%, QF Series 2.0%, QFW Series 3.5%, Series R 2.0%.

# CANADA LIFE SHORT TERM BOND FUND (PORTICO)

(Formerly Short Term Bond Fund (Portico))

ANNUAL MANAGEMENT REPORT OF FUND PERFORMANCE | For the Year Ended March 31, 2021

## Summary of Investment Portfolio at March 31, 2021

<b>Portfolio Allocation</b>	<b>% of NAV</b>
Bonds	94.2
<i>Bonds</i>	<i>94.1</i>
<i>Short futures*</i>	<i>0.1</i>
Cash and short-term investments	4.0
Exchange-traded funds/notes	0.8
Other assets (liabilities)	0.7
Equities	0.3

<b>Regional Allocation</b>	<b>% of NAV</b>
Canada	92.6
Cash and short-term investments	4.0
United States	1.7
Other assets (liabilities)	0.7
Other	0.5
Germany	0.4
Japan	0.1

<b>Sector Allocation</b>	<b>% of NAV</b>
Corporate bonds	68.5
Federal bonds	20.5
Provincial bonds	5.0
Cash and short-term investments	4.0
Exchange-traded funds/notes	0.8
Other assets (liabilities)	0.7
Financials	0.3
Futures	0.1
Mortgage backed	0.1

<b>Bonds by Credit Rating**</b>	<b>% of NAV</b>
AAA	20.5
AA	2.2
A	20.1
BBB	23.4
Less than BBB	0.4
Unrated	27.5

\* Notional values represent –18.7% of NAV for Canadian 10-Year Bond Futures.

\*\* Credit ratings and rating categories are based on ratings issued by a designated rating organization.

## Top 25 Long Positions

<b>Issuer</b>	<b>% of NAV</b>
Cash and short-term investments	4.0
Canada Housing Trust 1.80% 12-15-2024	3.5
Canada Housing Trust 2.35% 09-15-2023	3.1
Master Credit Card Trust II 3.06% 01-21-2022	2.6
Canadian Imperial Bank of Commerce 1.10% 01-19-2026	2.4
Government of Canada 1.50% 09-01-2024	2.3
Canada Housing Trust 1.95% 12-15-2025	2.1
Glacier Credit Card Trust 3.30% 09-20-2022	2.1
Centre Street Trust 3.69% 06-14-2021 Callable	2.0
Brookfield Property Finance ULC 4.12% 10-19-2021	1.9
RioCan Real Estate Investment Trust 2.19% 04-09-2021	1.8
Government of Canada 2.00% 09-01-2023	1.8
Saputo Inc. 1.94% 06-13-2022 Callable 2022	1.7
The Empire Life Insurance Co. F/R 03-15-2028 Callable 2023	1.7
Manulife Bank of Canada 2.84% 01-12-2023	1.6
The Bank of Nova Scotia 2.38% 05-01-2023	1.6
Canada Housing Trust 0.95% 06-15-2025	1.6
Government of Canada 1.50% 06-01-2026	1.5
Government of Canada 0.50% 09-01-2025	1.5
bcIMC Realty Corp. 2.15% 08-11-2022 Callable 2022	1.3
Bell Canada Inc. 3.35% 03-22-2023	1.3
Government of Canada 2.25% 03-01-2024	1.3
Province of Quebec 2.25% 02-22-2024	1.2
Glacier Credit Card Trust 3.43% 06-06-2024	1.2
Pembina Pipeline Corp. 2.56% 06-01-2023	1.2

<b>Top long positions as a percentage of total net asset value</b>	<b>48.3</b>
--	-------------

## Top 25 Short Positions

<b>Issuer</b>	<b>% of NAV</b>
Canadian 10-Year Bond Futures*	0.1

<b>Top short positions as a percentage of total net asset value</b>	<b>0.1</b>
---	------------

The investments and percentages may have changed since March 31, 2021, due to the ongoing portfolio transactions of the Fund. Quarterly updates of holdings are available within 60 days of the end of each quarter except for March 31, the Fund's fiscal year-end, when they are available within 90 days.

# CANADA LIFE SHORT TERM BOND FUND (PORTICO)

(Formerly Short Term Bond Fund (Portico))

ANNUAL MANAGEMENT REPORT OF FUND PERFORMANCE | For the Year Ended March 31, 2021

## Financial Highlights

The following tables show selected key financial information about the Fund and are intended to help you understand the Fund's financial performance for each of the fiscal periods presented below. If during the period a fund or series was established or reinstated, "period" represents the period from inception or reinstatement to the end of that fiscal period. Series inception or reinstatement dates can be found under *Fund Formation and Series Information*.

### THE FUND'S NET ASSETS PER SECURITY (\$)<sup>1</sup>

	Mar. 31 2021	Mar. 31 2020	Mar. 31 2019	Mar. 31 2018	Mar. 31 2017
<b>Q Series (formerly Quadrus Series)</b>					
<b>Net assets, beginning of period</b>	9.79	9.74	9.66	9.92	9.98
<b>Increase (decrease) from operations:</b>					
Total revenue	0.24	0.24	0.25	0.27	0.27
Total expenses	(0.14)	(0.14)	(0.14)	(0.14)	(0.14)
Realized gains (losses) for the period	0.14	0.04	(0.18)	(0.08)	(0.09)
Unrealized gains (losses) for the period	0.07	0.01	0.24	(0.17)	–
<b>Total increase (decrease) from operations<sup>2</sup></b>	0.31	0.15	0.17	(0.12)	0.04
<b>Distributions:</b>					
From net investment income (excluding Canadian dividends)	(0.10)	(0.10)	(0.12)	(0.13)	(0.12)
From Canadian dividends	–	–	–	–	–
From capital gains	–	–	–	–	–
Return of capital	–	–	–	–	–
<b>Total annual distributions<sup>3</sup></b>	(0.10)	(0.10)	(0.12)	(0.13)	(0.12)
<b>Net assets, end of period</b>	9.96	9.79	9.74	9.66	9.92
<b>H Series</b>					
<b>Net assets, beginning of period</b>	9.69	9.65	9.57	9.84	9.91
<b>Increase (decrease) from operations:</b>					
Total revenue	0.24	0.24	0.24	0.27	0.28
Total expenses	(0.08)	(0.08)	(0.07)	(0.07)	(0.09)
Realized gains (losses) for the period	0.14	0.03	(0.21)	(0.09)	(0.05)
Unrealized gains (losses) for the period	0.07	0.01	0.23	(0.17)	(0.01)
<b>Total increase (decrease) from operations<sup>2</sup></b>	0.37	0.20	0.19	(0.06)	0.13
<b>Distributions:</b>					
From net investment income (excluding Canadian dividends)	(0.16)	(0.16)	(0.18)	(0.19)	(0.18)
From Canadian dividends	–	–	–	–	–
From capital gains	–	–	–	–	–
Return of capital	–	–	–	–	–
<b>Total annual distributions<sup>3</sup></b>	(0.16)	(0.16)	(0.18)	(0.19)	(0.18)
<b>Net assets, end of period</b>	9.86	9.69	9.65	9.57	9.84

<b>HW Series</b>	Mar. 31 2021	Mar. 31 2020	Mar. 31 2019	Mar. 31 2018	Mar. 31 2017
<b>Net assets, beginning of period</b>	10.20	10.16	10.00	n/a	n/a
<b>Increase (decrease) from operations:</b>					
Total revenue	0.25	0.26	0.18	n/a	n/a
Total expenses	(0.08)	(0.07)	(0.05)	n/a	n/a
Realized gains (losses) for the period	0.13	0.02	(0.02)	n/a	n/a
Unrealized gains (losses) for the period	0.07	0.01	0.17	n/a	n/a
<b>Total increase (decrease) from operations<sup>2</sup></b>	0.37	0.22	0.28	n/a	n/a
<b>Distributions:</b>					
From net investment income (excluding Canadian dividends)	(0.17)	(0.18)	(0.13)	n/a	n/a
From Canadian dividends	–	–	–	n/a	n/a
From capital gains	–	–	–	n/a	n/a
Return of capital	–	–	–	n/a	n/a
<b>Total annual distributions<sup>3</sup></b>	(0.17)	(0.18)	(0.13)	n/a	n/a
<b>Net assets, end of period</b>	10.39	10.20	10.16	n/a	n/a
<b>L Series</b>					
<b>Net assets, beginning of period</b>	9.76	9.71	9.62	9.89	9.96
<b>Increase (decrease) from operations:</b>					
Total revenue	0.24	0.24	0.25	0.27	0.27
Total expenses	(0.13)	(0.13)	(0.13)	(0.13)	(0.13)
Realized gains (losses) for the period	0.11	0.04	(0.17)	(0.09)	(0.07)
Unrealized gains (losses) for the period	0.07	0.01	0.24	(0.17)	–
<b>Total increase (decrease) from operations<sup>2</sup></b>	0.29	0.16	0.19	(0.12)	0.07
<b>Distributions:</b>					
From net investment income (excluding Canadian dividends)	(0.11)	(0.11)	(0.12)	(0.15)	(0.14)
From Canadian dividends	–	–	–	–	–
From capital gains	–	–	–	–	–
Return of capital	–	–	–	–	–
<b>Total annual distributions<sup>3</sup></b>	(0.11)	(0.11)	(0.12)	(0.15)	(0.14)
<b>Net assets, end of period</b>	9.94	9.76	9.71	9.62	9.89

(1) These calculations are prescribed by securities regulations and are not intended to be a reconciliation between opening and closing net assets per security. This information is derived from the Fund's audited annual financial statements. The net assets per security presented in the financial statements may differ from the net asset value per security calculated for fund pricing purposes. An explanation of these differences, if any, can be found in the *Notes to Financial Statements*.

(2) Net assets and distributions are based on the actual number of securities outstanding at the relevant time. The increase/decrease from operations is based on the weighted average number of securities outstanding over the fiscal period.

(3) Distributions were paid in cash/reinvested in additional securities of the Fund, or both.

# CANADA LIFE SHORT TERM BOND FUND (PORTICO)

(Formerly Short Term Bond Fund (Portico))

ANNUAL MANAGEMENT REPORT OF FUND PERFORMANCE | For the Year Ended March 31, 2021

## THE FUND'S NET ASSETS PER SECURITY (\$)¹ (cont'd)

N Series	Mar. 31 2021	Mar. 31 2020	Mar. 31 2019	Mar. 31 2018	Mar. 31 2017
<b>Net assets, beginning of period</b>	<b>9.83</b>	9.79	9.70	9.97	10.04
<b>Increase (decrease) from operations:</b>					
Total revenue	<b>0.24</b>	0.25	0.25	0.27	0.27
Total expenses	–	–	–	–	–
Realized gains (losses) for the period	<b>0.13</b>	0.02	(0.20)	(0.11)	(0.08)
Unrealized gains (losses) for the period	<b>0.07</b>	0.01	0.24	(0.17)	–
<b>Total increase (decrease) from operations²</b>	<b>0.44</b>	0.28	0.29	(0.01)	0.19
<b>Distributions:</b>					
From net investment income (excluding Canadian dividends)	<b>(0.24)</b>	(0.24)	(0.26)	(0.28)	(0.27)
From Canadian dividends	–	–	–	–	–
From capital gains	–	–	–	–	–
Return of capital	–	–	–	–	–
<b>Total annual distributions³</b>	<b>(0.24)</b>	(0.24)	(0.26)	(0.28)	(0.27)
<b>Net assets, end of period</b>	<b>10.01</b>	9.83	9.79	9.70	9.97

QF Series	Mar. 31 2021	Mar. 31 2020	Mar. 31 2019	Mar. 31 2018	Mar. 31 2017
<b>Net assets, beginning of period</b>	<b>9.78</b>	9.74	9.66	9.93	10.00
<b>Increase (decrease) from operations:</b>					
Total revenue	<b>0.24</b>	0.24	0.24	0.27	0.17
Total expenses	<b>(0.08)</b>	(0.08)	(0.08)	(0.08)	(0.06)
Realized gains (losses) for the period	<b>0.10</b>	0.04	(0.23)	(0.07)	0.01
Unrealized gains (losses) for the period	<b>0.07</b>	0.01	0.24	(0.16)	–
<b>Total increase (decrease) from operations²</b>	<b>0.33</b>	0.21	0.17	(0.04)	0.12
<b>Distributions:</b>					
From net investment income (excluding Canadian dividends)	<b>(0.16)</b>	(0.16)	(0.18)	(0.20)	(0.12)
From Canadian dividends	–	–	–	–	–
From capital gains	–	–	–	–	–
Return of capital	–	–	–	–	–
<b>Total annual distributions³</b>	<b>(0.16)</b>	(0.16)	(0.18)	(0.20)	(0.12)
<b>Net assets, end of period</b>	<b>9.95</b>	9.78	9.74	9.66	9.93

QFW Series	Mar. 31 2021	Mar. 31 2020	Mar. 31 2019	Mar. 31 2018	Mar. 31 2017
<b>Net assets, beginning of period</b>	<b>10.20</b>	10.16	10.00	n/a	n/a
<b>Increase (decrease) from operations:</b>					
Total revenue	<b>0.25</b>	0.26	0.18	n/a	n/a
Total expenses	<b>(0.05)</b>	(0.04)	(0.02)	n/a	n/a
Realized gains (losses) for the period	<b>0.11</b>	0.03	(0.02)	n/a	n/a
Unrealized gains (losses) for the period	<b>0.07</b>	0.01	0.17	n/a	n/a
<b>Total increase (decrease) from operations²</b>	<b>0.38</b>	0.26	0.31	n/a	n/a
<b>Distributions:</b>					
From net investment income (excluding Canadian dividends)	<b>(0.20)</b>	(0.21)	(0.15)	n/a	n/a
From Canadian dividends	–	–	–	n/a	n/a
From capital gains	–	–	–	n/a	n/a
Return of capital	–	–	–	n/a	n/a
<b>Total annual distributions³</b>	<b>(0.20)</b>	(0.21)	(0.15)	n/a	n/a
<b>Net assets, end of period</b>	<b>10.38</b>	10.20	10.16	n/a	n/a

Series R	Mar. 31 2021	Mar. 31 2020	Mar. 31 2019	Mar. 31 2018	Mar. 31 2017
<b>Net assets, beginning of period</b>	<b>9.81</b>	9.76	9.68	9.94	10.00
<b>Increase (decrease) from operations:</b>					
Total revenue	<b>0.24</b>	0.25	0.25	0.27	0.17
Total expenses	–	–	–	–	–
Realized gains (losses) for the period	<b>0.09</b>	0.02	(0.17)	(0.08)	(0.05)
Unrealized gains (losses) for the period	<b>0.07</b>	0.01	0.24	(0.17)	–
<b>Total increase (decrease) from operations²</b>	<b>0.40</b>	0.28	0.32	0.02	0.12
<b>Distributions:</b>					
From net investment income (excluding Canadian dividends)	<b>(0.24)</b>	(0.24)	(0.26)	(0.27)	(0.17)
From Canadian dividends	–	–	–	–	–
From capital gains	–	–	–	–	–
Return of capital	–	–	–	–	–
<b>Total annual distributions³</b>	<b>(0.24)</b>	(0.24)	(0.26)	(0.27)	(0.17)
<b>Net assets, end of period</b>	<b>9.99</b>	9.81	9.76	9.68	9.94



# CANADA LIFE SHORT TERM BOND FUND (PORTICO)

(Formerly Short Term Bond Fund (Portico))

ANNUAL MANAGEMENT REPORT OF FUND PERFORMANCE | For the Year Ended March 31, 2021

## RATIOS AND SUPPLEMENTAL DATA

	Mar. 31	Mar. 31	Mar. 31	Mar. 31	Mar. 31
	2021	2020	2019	2018	2017
<b>Q Series (formerly Quadrus Series)</b>					
Total net asset value (\$000) <sup>1</sup>	2,265	2,855	3,686	5,606	9,583
Securities outstanding (000) <sup>1</sup>	227	292	378	581	966
Management expense ratio (%) <sup>2</sup>	1.43	1.43	1.44	1.42	1.42
Management expense ratio before waivers or absorptions (%) <sup>2</sup>	1.43	1.43	1.44	1.42	1.42
Trading expense ratio (%) <sup>3</sup>	0.00	0.00	0.00	0.00	0.00
Portfolio turnover rate (%) <sup>4</sup>	68.84	84.93	68.51	78.79	86.77
Net asset value per security (\$)	9.96	9.79	9.74	9.65	9.92
<b>H Series</b>					
Total net asset value (\$000) <sup>1</sup>	198	248	265	715	647
Securities outstanding (000) <sup>1</sup>	20	26	27	75	66
Management expense ratio (%) <sup>2</sup>	0.86	0.86	0.86	0.83	0.86
Management expense ratio before waivers or absorptions (%) <sup>2</sup>	0.86	0.86	0.86	0.83	0.86
Trading expense ratio (%) <sup>3</sup>	0.00	0.00	0.00	0.00	0.00
Portfolio turnover rate (%) <sup>4</sup>	68.84	84.93	68.51	78.79	86.77
Net asset value per security (\$)	9.86	9.69	9.65	9.57	9.84
<b>HW Series</b>					
Total net asset value (\$000) <sup>1</sup>	218	231	235	n/a	n/a
Securities outstanding (000) <sup>1</sup>	21	23	23	n/a	n/a
Management expense ratio (%) <sup>2</sup>	0.72	0.72	0.71	n/a	n/a
Management expense ratio before waivers or absorptions (%) <sup>2</sup>	0.72	0.72	0.71	n/a	n/a
Trading expense ratio (%) <sup>3</sup>	0.00	0.00	0.00	n/a	n/a
Portfolio turnover rate (%) <sup>4</sup>	68.84	84.93	68.51	n/a	n/a
Net asset value per security (\$)	10.39	10.20	10.16	n/a	n/a
<b>L Series</b>					
Total net asset value (\$000) <sup>1</sup>	1,360	1,425	2,503	3,242	6,572
Securities outstanding (000) <sup>1</sup>	137	146	258	337	665
Management expense ratio (%) <sup>2</sup>	1.29	1.29	1.31	1.29	1.28
Management expense ratio before waivers or absorptions (%) <sup>2</sup>	1.29	1.29	1.31	1.29	1.28
Trading expense ratio (%) <sup>3</sup>	0.00	0.00	0.00	0.00	0.00
Portfolio turnover rate (%) <sup>4</sup>	68.84	84.93	68.51	78.79	86.77
Net asset value per security (\$)	9.94	9.76	9.71	9.62	9.89

	Mar. 31	Mar. 31	Mar. 31	Mar. 31	Mar. 31
	2021	2020	2019	2018	2017
<b>N Series</b>					
Total net asset value (\$000) <sup>1</sup>	3,465	4,624	5,766	8,569	8,752
Securities outstanding (000) <sup>1</sup>	346	471	589	883	878
Management expense ratio (%) <sup>2</sup>	0.02	0.02	0.03	0.01	0.01
Management expense ratio before waivers or absorptions (%) <sup>2</sup>	0.02	0.02	0.03	0.01	0.01
Trading expense ratio (%) <sup>3</sup>	0.00	0.00	0.00	0.00	0.00
Portfolio turnover rate (%) <sup>4</sup>	68.84	84.93	68.51	78.79	86.77
Net asset value per security (\$)	10.01	9.83	9.79	9.70	9.97
<b>QF Series</b>					
Total net asset value (\$000) <sup>1</sup>	140	122	93	277	203
Securities outstanding (000) <sup>1</sup>	14	12	10	29	20
Management expense ratio (%) <sup>2</sup>	0.88	0.84	0.88	0.83	0.82
Management expense ratio before waivers or absorptions (%) <sup>2</sup>	0.88	0.85	0.88	0.83	0.82
Trading expense ratio (%) <sup>3</sup>	0.00	0.00	0.00	0.00	0.00
Portfolio turnover rate (%) <sup>4</sup>	68.84	84.93	68.51	78.79	86.77
Net asset value per security (\$)	9.95	9.78	9.74	9.66	9.93
<b>QFW Series</b>					
Total net asset value (\$000) <sup>1</sup>	1	1	1	n/a	n/a
Securities outstanding (000) <sup>1</sup>	–	–	–	n/a	n/a
Management expense ratio (%) <sup>2</sup>	0.68	0.68	0.68	n/a	n/a
Management expense ratio before waivers or absorptions (%) <sup>2</sup>	0.70	0.70	0.69	n/a	n/a
Trading expense ratio (%) <sup>3</sup>	0.00	0.00	0.00	n/a	n/a
Portfolio turnover rate (%) <sup>4</sup>	68.84	84.93	68.51	n/a	n/a
Net asset value per security (\$)	10.38	10.20	10.16	n/a	n/a

- (1) This information is provided as at the end of the fiscal period shown.
- (2) Management expense ratio is based on total expenses (excluding commissions and other portfolio transaction costs, income taxes and withholding taxes) for the stated period and is expressed as an annualized percentage of daily average net asset value during the period. If in the period a series was established or reinstated, the management expense ratio is annualized from the date of inception or reinstatement. Mackenzie/CLIML may waive or absorb operating expenses at its discretion and stop waiving or absorbing such expenses at any time without notice.
- (3) The trading expense ratio represents total commissions and other portfolio transaction costs expressed as an annualized percentage of daily average net asset value during the period.
- (4) The Fund's portfolio turnover rate indicates how actively the Fund's portfolio advisor manages its portfolio investments. A portfolio turnover rate of 100% is equivalent to the Fund buying and selling all of the securities in its portfolio once in the course of the period. The higher a fund's portfolio turnover rate in a period, the greater the trading costs payable by the fund in the period, and the greater the chance of an investor receiving taxable capital gains in the year. There is not necessarily a relationship between a high turnover rate and the performance of a fund. The portfolio turnover rate is not provided when the Fund is less than one year old. The value of any trades to realign the Fund's portfolio after a fund merger, if any, is excluded from the portfolio turnover rate.

# CANADA LIFE SHORT TERM BOND FUND (PORTICO)

(Formerly Short Term Bond Fund (Portico))

ANNUAL MANAGEMENT REPORT OF FUND PERFORMANCE | For the Year Ended March 31, 2021

## RATIOS AND SUPPLEMENTAL DATA (cont'd)

Series R	Mar. 31 2021	Mar. 31 2020	Mar. 31 2019	Mar. 31 2018	Mar. 31 2017
Total net asset value (\$000) <sup>1</sup>	19,776	17,903	16,206	24,286	14,204
Securities outstanding (000) <sup>1</sup>	1,981	1,826	1,660	2,509	1,429
Management expense ratio (%) <sup>2</sup>	–	–	–	–	–
Management expense ratio before waivers or absorptions (%) <sup>2</sup>	–	–	–	–	–
Trading expense ratio (%) <sup>3</sup>	0.00	0.00	0.00	0.00	0.00
Portfolio turnover rate (%) <sup>4</sup>	68.84	84.93	68.51	78.79	86.77
Net asset value per security (\$)	9.99	9.81	9.76	9.68	9.94

## Management Fees

The management fee for each applicable series is calculated and accrued daily as a percentage of its NAV. The Fund's management fees were used by Mackenzie, in the pre-manager change period, in part to pay GLC Asset Management Group Ltd., an affiliate of Mackenzie, for investment advisory services, including managing the investment portfolio of the Fund and/or the underlying fund(s), as applicable, including providing investment analysis and recommendations, making investment decisions and making brokerage arrangements for the purchase and sale of the investment portfolio. Subsequent to the change in manager, the Fund's management fees were used by CLIML in part to pay Mackenzie for investment advisory services.

Quadrus Investment Services Ltd. ("Quadrus"), an affiliate of CLIML and Mackenzie, is the principal distributor for the Fund and is paid trailing commissions out of the management fees. In the pre-manager change period, Canada Life provided certain services to Mackenzie in connection with Mackenzie's portfolio management activities. Canada Life was responsible for paying certain administrative costs and all sales commissions, trailing commissions and any other compensation (collectively, "distribution-related payments") to registered dealers whose clients invest in the Fund. As such, Quadrus and Canada Life received a portion of the management fees that the Fund paid to Mackenzie. Approximately 77% of the total management fees that Mackenzie received from the Canada Life Mutual Funds during the pre-manager change period was paid under these arrangements.

Subsequent to the change in manager, CLIML used the management fees to fund distribution-related payments to Quadrus and to registered dealers and brokers whose clients invest in the Fund.

Mackenzie and CLIML used approximately 38% of the total management fee revenues received from all Canada Life Mutual Funds during the year to fund distribution-related payments to registered dealers and brokers. In comparison, such distribution-related payments for the Fund represented on average 40% of the management fees paid by all applicable series of the Fund during the year. The actual percentage for each series may be higher or lower than the average depending on the level of trailing commissions and sales commissions paid for that series. The higher proportion of distribution-related payments is primarily attributable to sales commissions related to gross sales of the Fund.

# CANADA LIFE SHORT TERM BOND FUND (PORTICO)

(Formerly Short Term Bond Fund (Portico))

ANNUAL MANAGEMENT REPORT OF FUND PERFORMANCE | For the Year Ended March 31, 2021

## Fund Formation and Series Information

The Fund may have undergone a number of changes, such as a reorganization or a change in manager, mandate or name. A history of the major changes affecting the Fund in the last 10 years can be found in the Fund's Annual Information Form.

Date of Formation June 28, 2013

The Fund may issue an unlimited number of securities of each series. The number of issued and outstanding securities of each series is disclosed in *Financial Highlights*.

**Series Distributed by Quadrus Investment Services Ltd.** (255 Dufferin Ave., London, Ontario, N6A 4K1; 1-888-532-3322; [www.canadalifeinvest.ca](http://www.canadalifeinvest.ca))

Q Series, H Series, HW Series, L Series, QF Series and QFW Series securities are no longer available for sale, except for additional purchases by investors who have held these securities since October 1, 2018. Before August 14, 2020, Q Series securities were known as Quadrus Series.

N Series securities are offered to investors investing a minimum of \$100,000, who have eligible minimum total holdings of \$500,000, and who have entered into an N type series account agreement with CLIML and Quadrus.

Series R securities are offered only to other funds managed by CLIML on a non-prospectus basis in connection with fund-of-fund arrangements.

An investor in the Fund may choose among different purchase options that are available under each series. These purchase options are a sales charge purchase option and a no-load purchase option. The charges under the sales charge purchase option are negotiated by investors with their dealers. Not all purchase options are available under each series of the Fund, and the charges for each purchase option may vary among the different series. For further details on these purchase options, please refer to the Fund's Simplified Prospectus and Fund Facts.

Series	Inception/ Reinstatement Date	Management Fees	Administration Fees
Q Series <sup>(2)</sup>	July 10, 2013	1.10%	0.17%
H Series	July 5, 2013	0.60%	0.15%
HW Series	August 7, 2018	0.50%	0.15%
L Series	July 19, 2013	1.00%	0.15%
N Series	August 28, 2013	— <sup>(1)</sup>	— <sup>(1)</sup>
QF Series	July 12, 2016	0.60%	0.17%
QFW Series	August 7, 2018	0.50%	0.15%
Series R	July 14, 2016	—*	—*

\* Not applicable.

(1) This fee is negotiable and payable directly to CLIML by investors in this series through redemptions of their securities.

(2) Before August 14, 2020, Q Series securities were known as Quadrus Series.